



Project Overview

Jennifer Czysz, Assistant Director, Nashua RPC



Residents of New Hampshire
shared their vision for the future
of the state during the
Granite State Future Project
over the course of

3 Years

Thoughts, ideas
and opinions were
provided through:



In person events



Surveys

Online input tools



All 9 Regional Planning Commissions Contributed Research & Data...

North Country Council

Bethlehem, NH

Lakes Region Planning Commission

Meredith, NH

Upper Valley Lake Sunapee RPC

Lebanon, NH

Southwest Region Planning Comm.

Keene, NH

Central NH Regional Planning Commission

Concord, NH

Southern NH Planning Commission

Manchester, NH

Nashua Regional Planning Commission

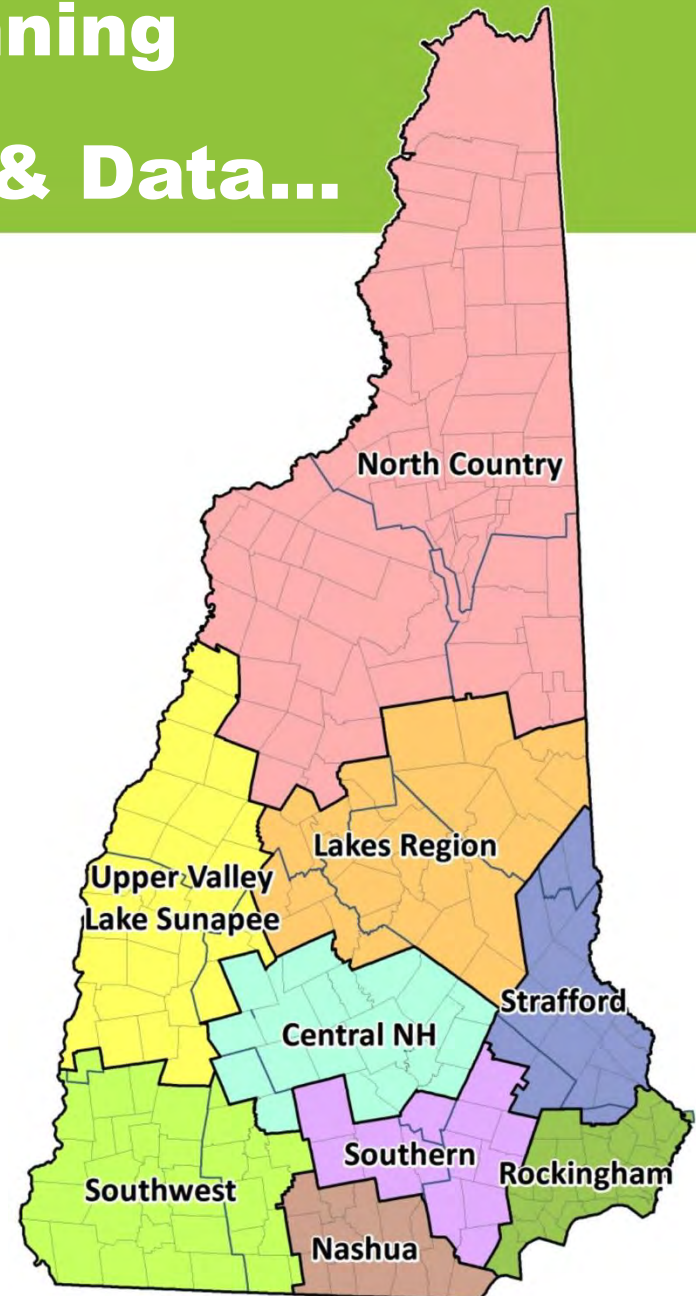
Merrimack, NH

Rockingham Planning Commission

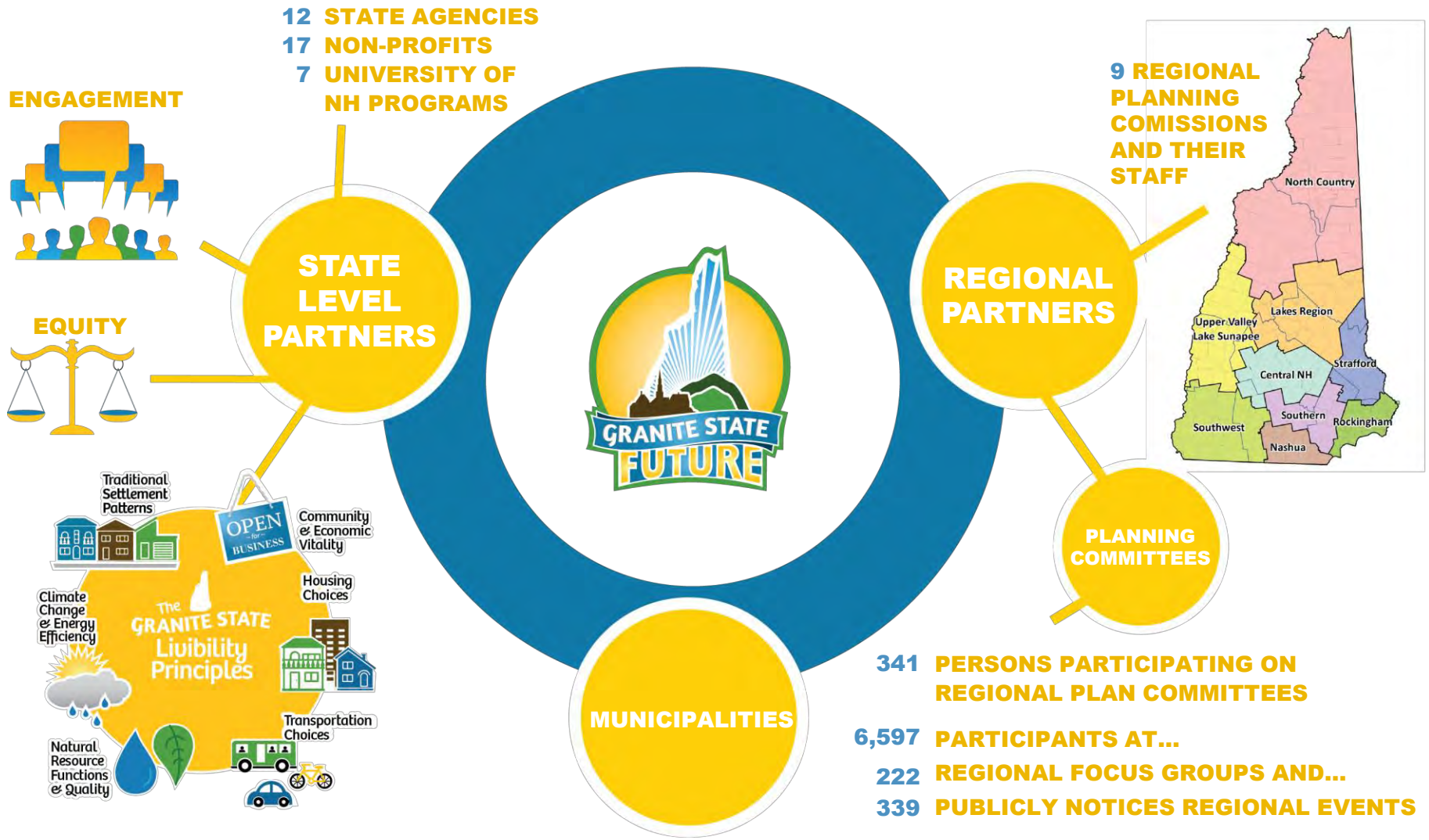
Exeter, NH

Strafford Regional Planning Commission

Rochester, NH



...In Partnership With Many Other Organizations Around the State.



Connections

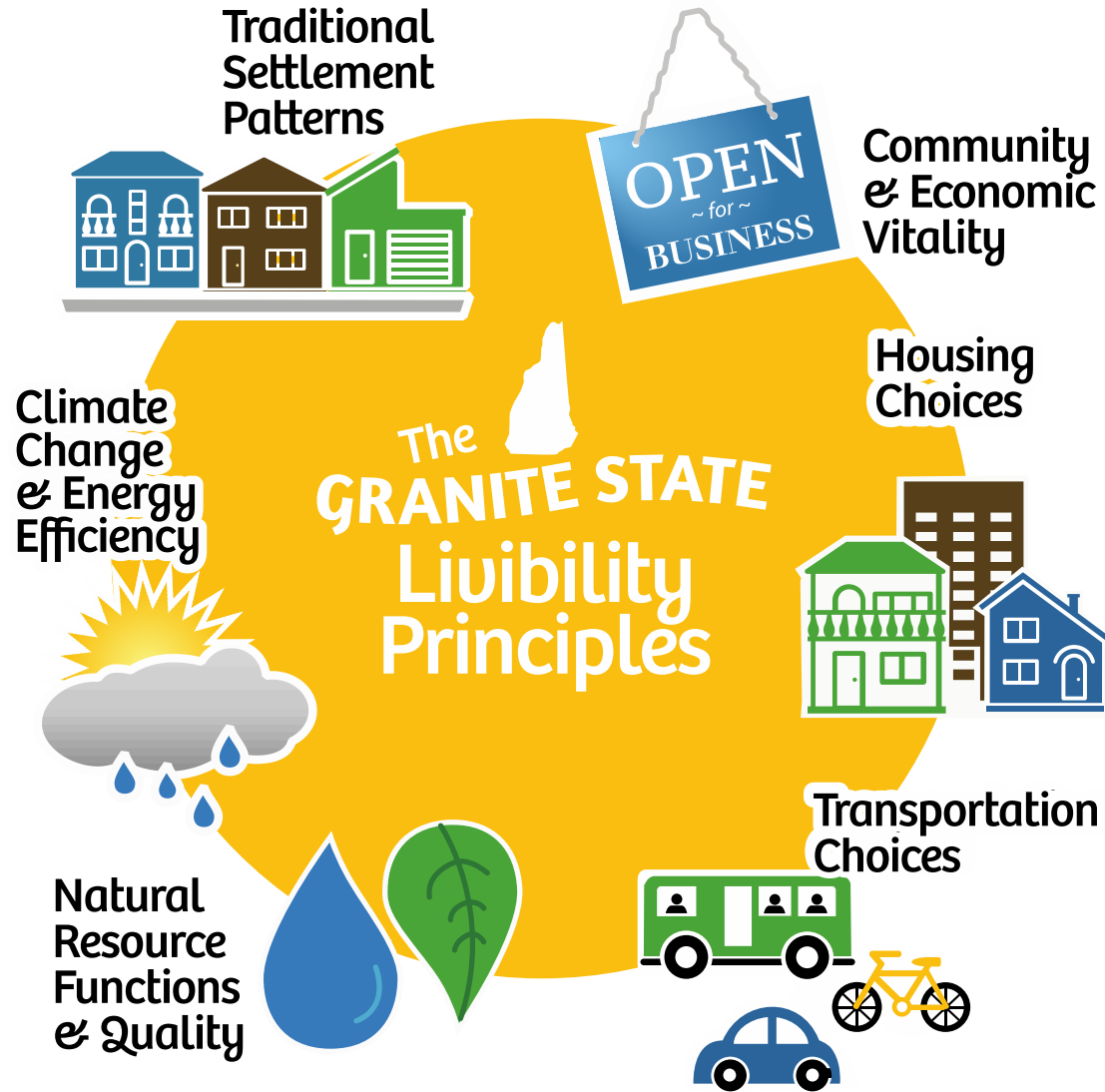
Linking Local, Regional, and State Planning

**State
Development
Plan
RSA 9-A**

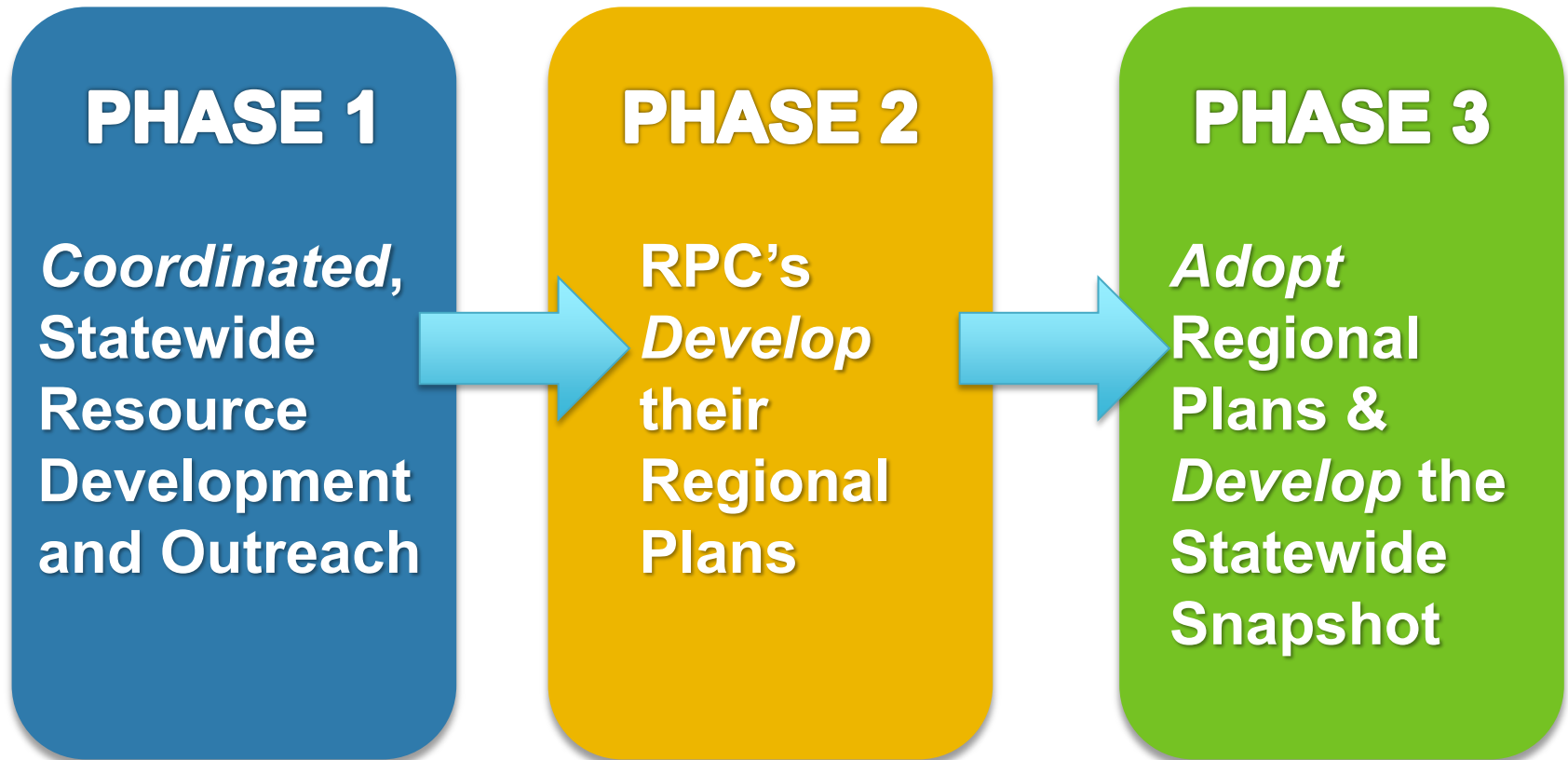
**Regional
Planning
RSA 36:47**

**Local Master
Plan
RSA 674:2**

The Livability Principles



Regional Planning Process

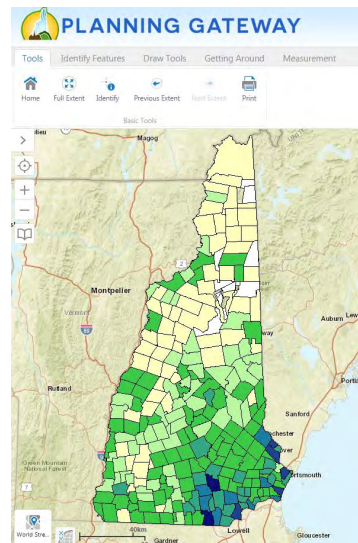
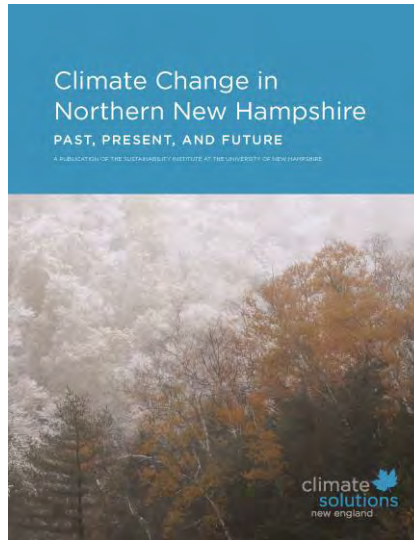


What We Created

Statewide Research >

- Collaborative Outreach
- Regional Plan Framework
- Existing Conditions & Trends Assessment
- Climate Change Studies

Common Metrics >



< Regional Plans



< Statewide Snapshot – The Final Results



Collaborative Outreach

www.granitestatefuture.org



TAG CLOUD

[Transportation](#) [SRPC](#)
[Community](#)
[and](#)
[Economic](#)
[Vitality](#)
[UVLSRPC](#) [RPC](#) [NRPC](#) [Grants](#)

Regional Planning

[Arts](#) [Broadband](#) [LRPC](#) [SWRPC](#)
[Capital Improvement Program](#) [SNHPC](#)
[Partners](#) [Environment](#) [FAQ](#)
[Permaculture](#)
[NH Housing](#) [Agriculture](#)
[Technical Assistance](#)
[Opportunities](#)
[Hazard Mitigation](#) [Climate](#)
[Outreach](#) [Implementation](#)
[Health](#) [NCC](#)



Nashua Regional Planning Commission - Online Forum

Locations Topics

Find Your Community Map Satellite

Explore Your Region!
Take a look at the Locations and Topics your neighbors have entered by selecting either tab above.

Either add a new point or vote and comment on what others have entered below.

Add a New Point
Ideas, suggestions, what's missing?

Vote or comment on what others have already submitted:

A Granite State Future Is Your Future

[About](#) | [Get Involved](#) | [Regions](#) | [Our Plans](#) | [News](#) | [Home](#)

SITE SEARCH

SHARE YOUR IDEA!

Tell us your future vision for where you live, work and visit in New Hampshire!

SEARCH THE IDEAS: by Keyword Or Location Select a Location

Regional Plan Framework

Interrelationship of the Regional Plan Components and the NH Livability Principles

| | NH Livability Principles | | | | | | |
|-----------------------------------------------|------------------------------|-----------------|------------------------|----------------------------------------|---------------------------------|--------------------------------------|---------------------------------------------------------------|
| | Compact Development Patterns | Housing Choices | Transportation Choices | Natural Resource Functions and Quality | Community and Economic Vitality | Climate Change and Energy Efficiency | <i>Creating Opportunity</i> <i>Equity & Engagement</i> |
| Housing | ■ | ■ | ■ | ■ | ■ | ■ | ■ |
| Regional Transportation Plan | ■ | ■ | ■ | ■ | ■ | ■ | ■ |
| Water Infrastructure Plan | ■ | ■ | ■ | ■ | ■ | ■ | ■ |
| Environmental Plan | ■ | ■ | ■ | ■ | ■ | ■ | ■ |
| Economic Development Plan | ■ | ■ | ■ | ■ | ■ | ■ | ■ |
| Comprehensive Climate Change Impacts | ■ | ■ | ■ | ■ | ■ | ■ | ■ |
| Energy Efficiency and Green Building Strategy | ■ | ■ | ■ | ■ | ■ | ■ | ■ |
| Scenario Planning | ■ | ■ | ■ | ■ | ■ | ■ | ■ |

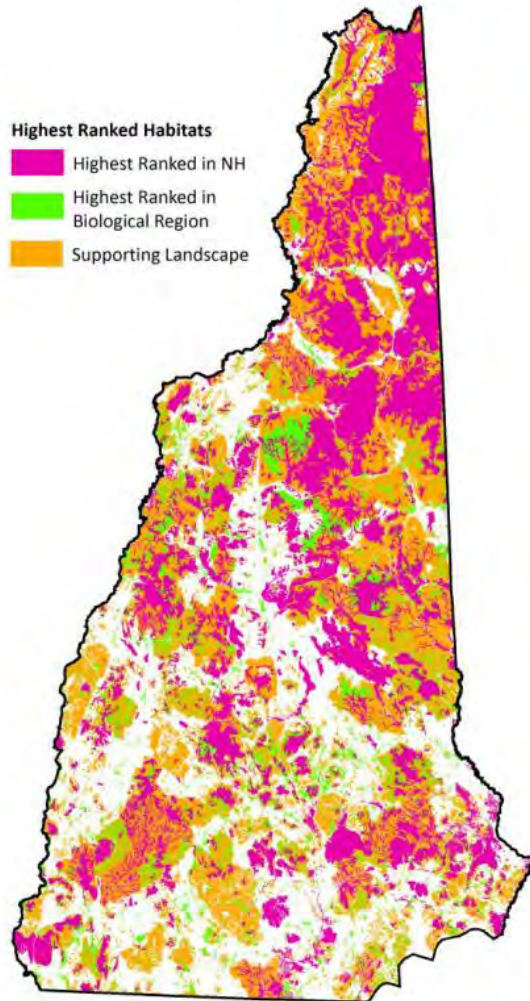
Degree of Interrelationships Key



Existing Conditions and Trends Assessment

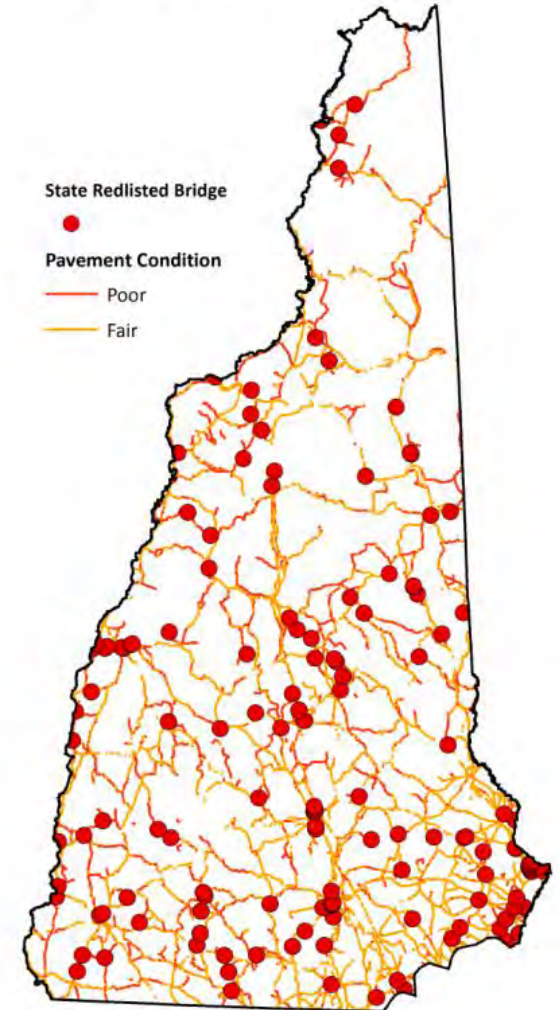
Highest Ranked Wildlife Habitat by Ecological Condition

Source: NH Fish and Game, Wildlife Action Plan



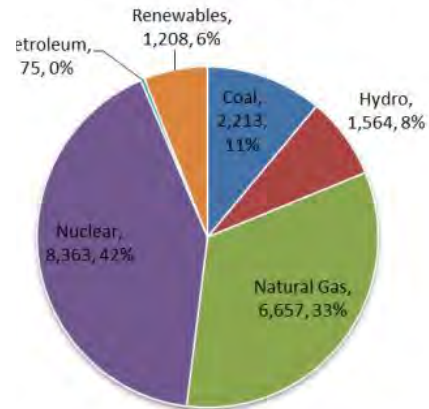
Roads and Bridges in Fair and Poor Condition

Source: NH Department of Transportation



Energy Generation in NH (million kWh)

Source: 2012 Vital Signs, NH ELMI

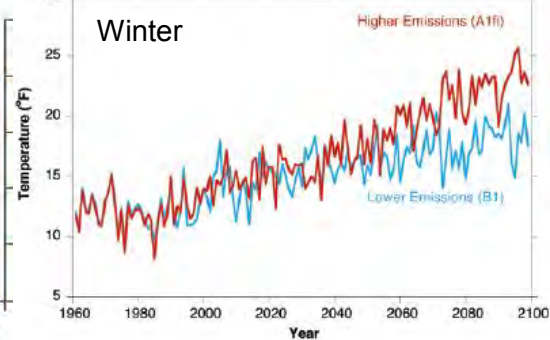
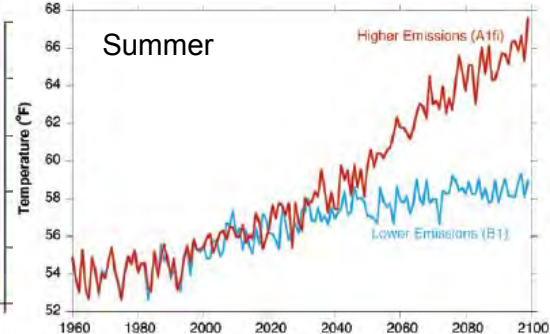
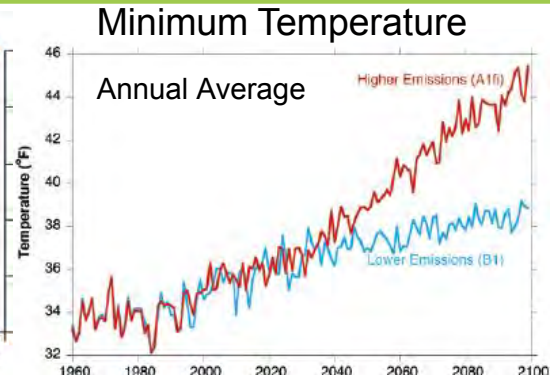
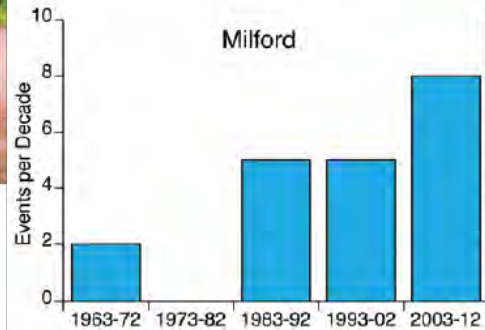
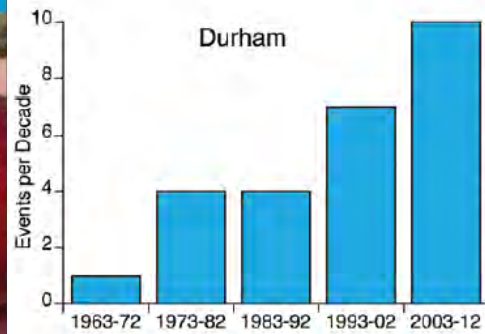
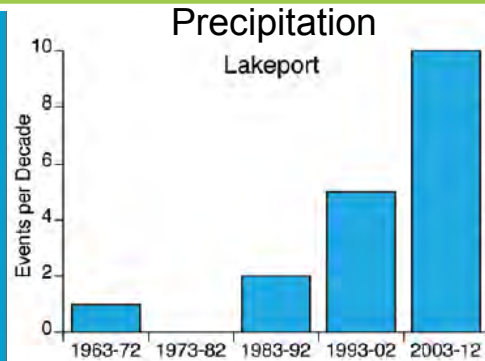


Climate Change Studies

Climate Change in Southern New Hampshire

PAST, PRESENT, AND FUTURE

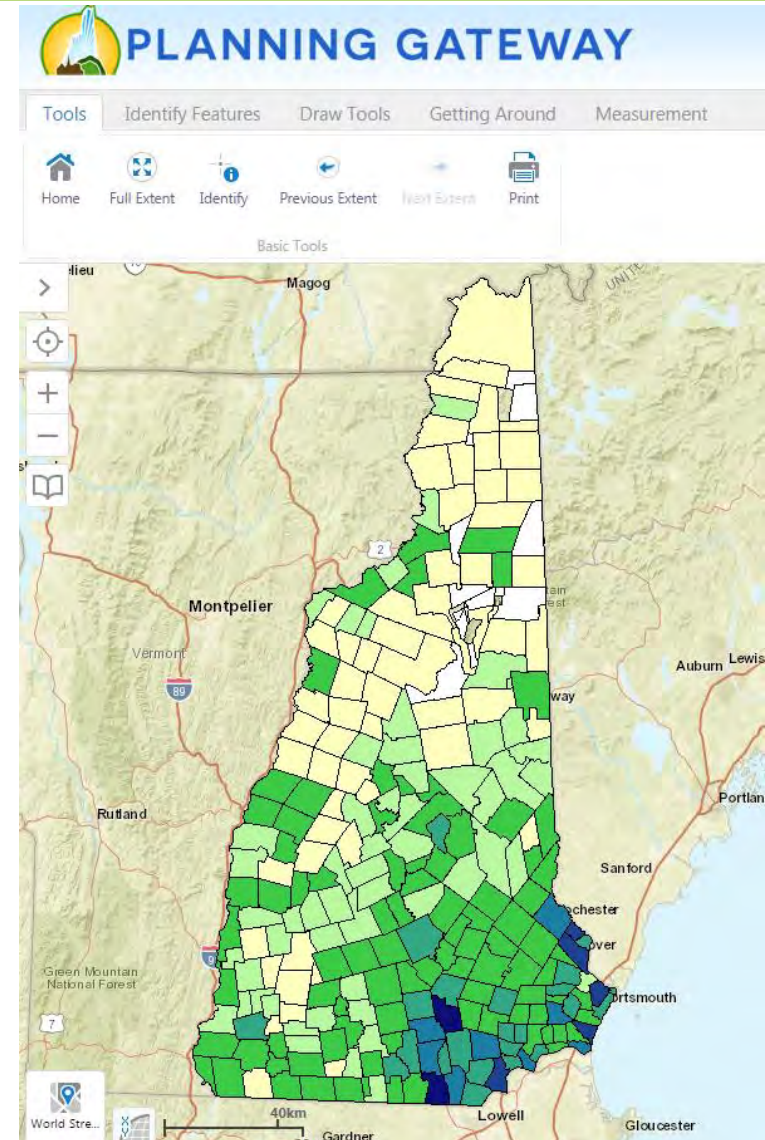
A PUBLICATION OF THE SUSTAINABILITY INSTITUTE AT THE UNIVERSITY OF NEW HAMPSHIRE



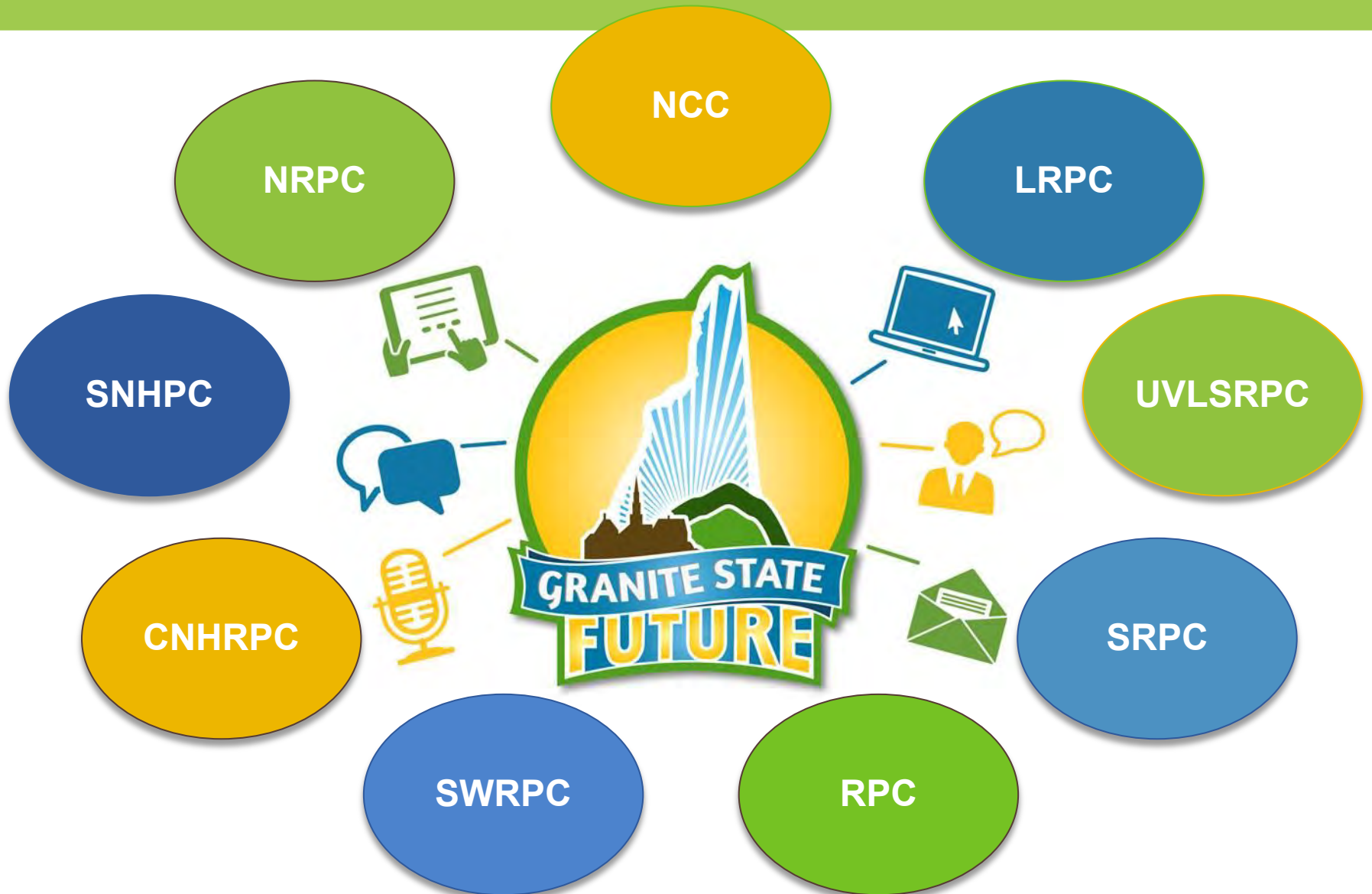
Common Planning Metrics

Data Downloads:

- Demographics
- Land Use
- Housing
- Transportation
- Water Infrastructure
- Environment
- Economic Development
- Climate and Energy



Nine Regional Plans





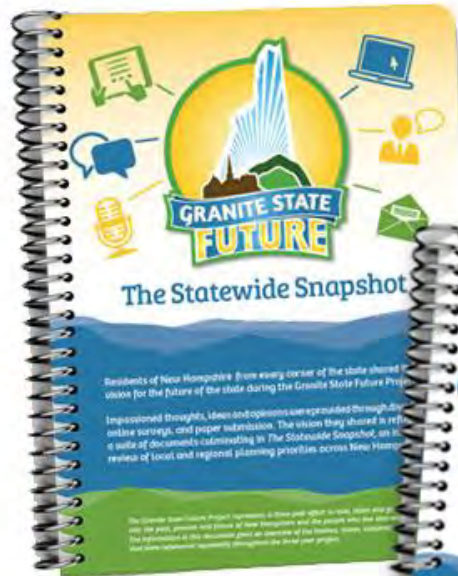
GRANITE STATE
Success Stories



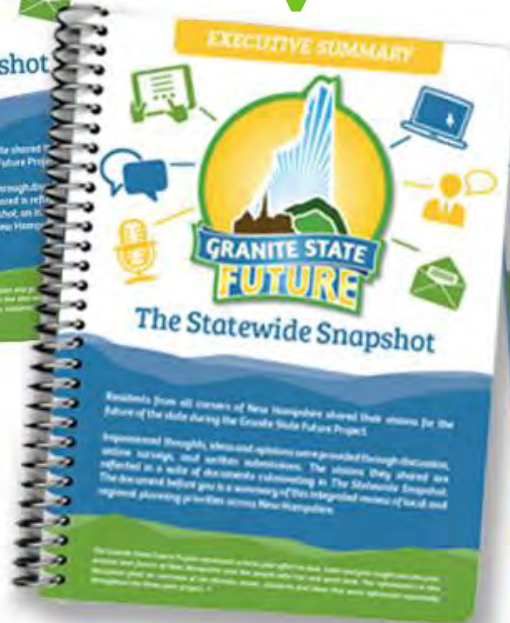


The Final Results

Executive Summary



Snapshot



Highlights

What We Have Learned

Common Themes

Several common themes emerged that wove through all plans, chapters and connected each of the NH Livability Principles



RESILIENCY



COLLABORATION



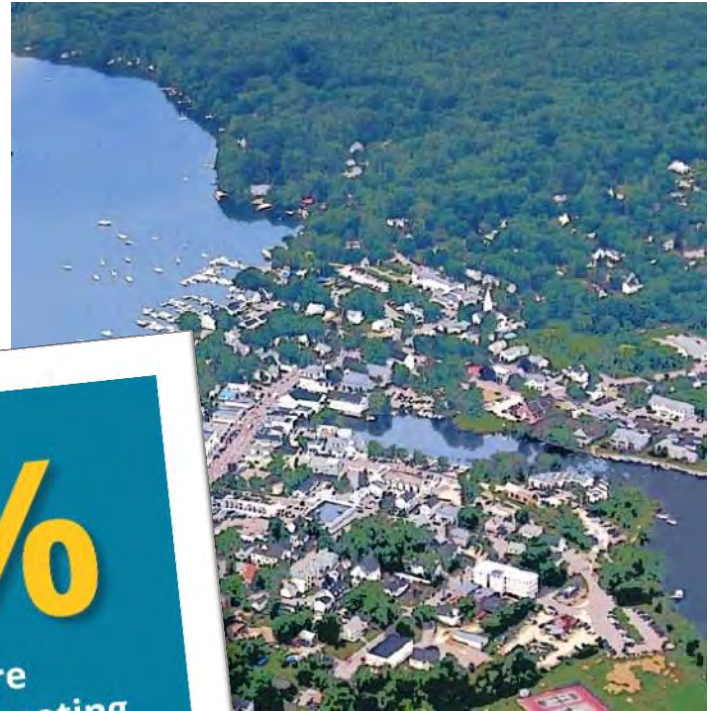
**DEMOGRAPHIC
SHIFTS**



EQUITY

- *Statewide Issues & Trends*
- *Regional Commonalities & Distinctions*
 - *Future Opportunities for Action*

Traditional Settlement Patterns...



90%
Of New Hampshire residents say promoting local agriculture should be actively encouraged.

Housing Choice



70%

Of New Hampshire residents think future development should occur in areas already developed.

Transportation Choice



74%

Overwhelmingly view maintaining the state's bridges and highways as the top priority for transportation funding.

Community & Economic Vitality...



86%
Place a High Priority on
Nearby Job Opportunities



Natural Resources Functions & Quality



#1

Environmental Protection
and Natural Resource
Conservation is the
#1 PRIORITY for investing
public dollars.

Climate Change & Energy Efficiency



\$5.9
Billion
Spent on Energy in 2013



Taking Action...

Where Do We Go From Here?

ALIGN
PROGRAM RULES

Maximize Potential Benefits

FORM
STRATEGIC PARTNERSHIPS

**Support Successful
Implementation of the Strategies**

BUILD
TECHNICAL ASSISTANCE

**Build Technical Assistance
and Share Knowledge**

SUSTAIN
ENGAGEMENT OPPORTUNITIES

Ensure *all* Voices are Heard

Achieve Strong Civic Health

Thank You.

Jennifer Czysz, Assistant Director
Nashua Regional Planning Commission
(603) 424-2240 x31
jenc@nashuarpc.org

www.nashuarpc.org
www.granitestatefuture.org



Department of
Environmental
Conservation

Planning for Sustainability: Support for New York Municipalities

Climate Smart Communities, Cleaner Greener
Communities, and Clean Energy Communities

Dazzle Ekblad
Office of Climate Change
NYS Department of Environmental Conservation

Timeline – Community Sustainability Programs

- **2009 – present:** [Climate Smart Communities](#)
 - Interagency effort: 6 state sponsors (primary = DEC)
- **2011 – Mar. 2016:** [Cleaner Greener Communities](#)
 - New York State Energy Research and Development Authority (NYSERDA)
- **2016 (soon) – TBD:** [Clean Energy Communities](#)
 - NYSERDA





Climate Smart Communities

Support for Local Climate Action



One of the few programs where local gov'ts can find:

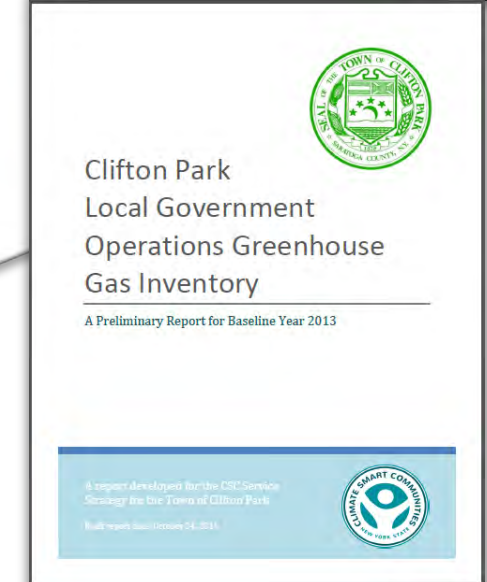
- Free technical support on energy and climate issues
- Tools, guides, webinars, and case studies

Assistance for each community to define their best strategies for:

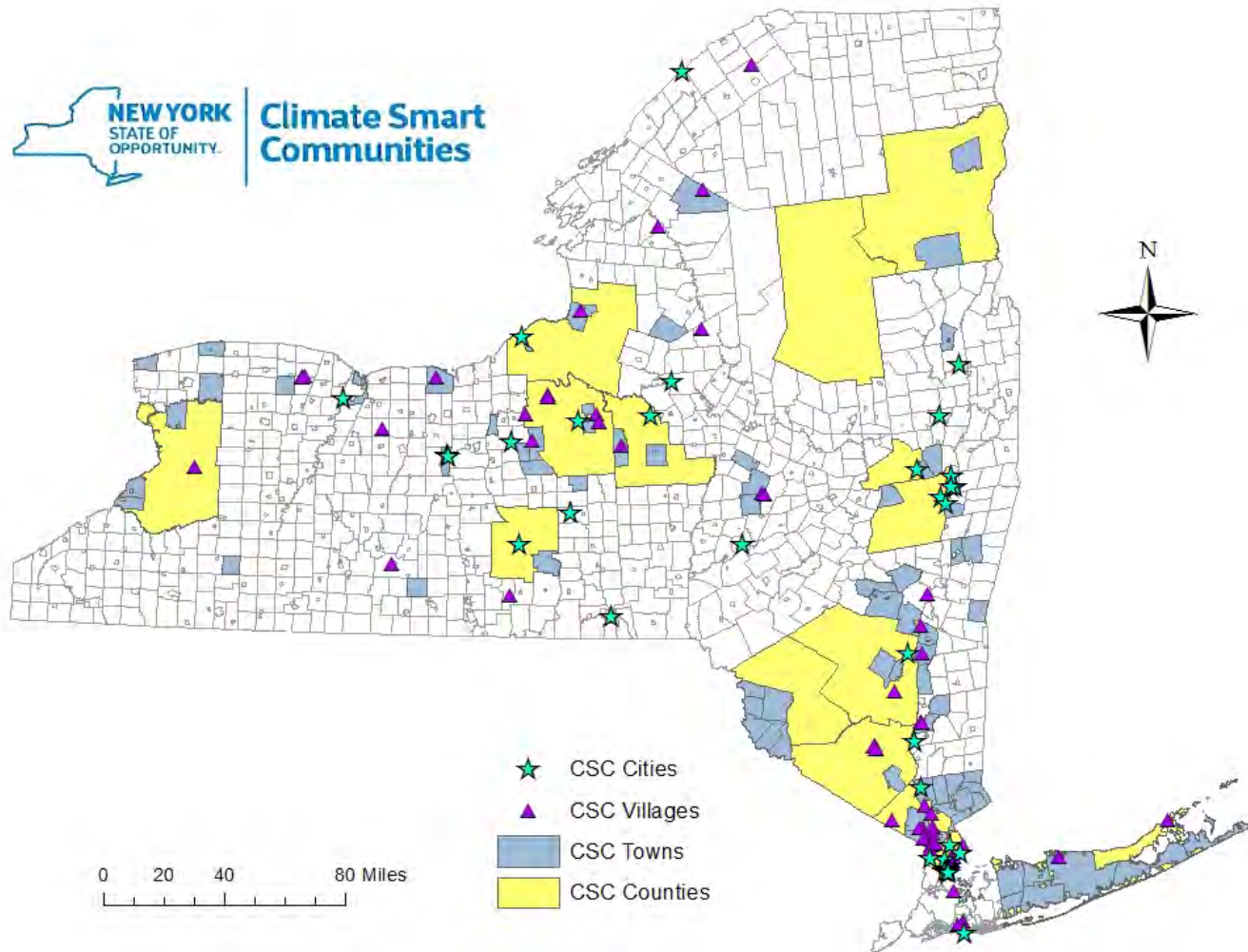
- Reducing emissions
- Cutting costs of energy use
- Building resiliency in the face of climate change

What have Climate Smart Communities done?

- **Climate and energy planning**
 - 89 Climate Action Plans
 - 112 Community GHG Inventories
 - 85 Government Ops GHG Inventories
- **Energy and transportation initiatives**
 - 17 Solarize campaigns
 - Clean fleet policies
 - Right-sizing
- **Vulnerability assessments**
- **Adaptation planning**



Where are the Climate Smart Communities?



Since 2009:

- 177 registered communities
- 7 certified communities
- One-third of New Yorkers (6.6 M)
- Smallest: V. of Van Etten (537)
- Largest: Suffolk County (1.5 M)

Full List of CSCs:

<http://www.dec.ny.gov/energy/56876.html>

Registered vs. Certified Climate Smart Community

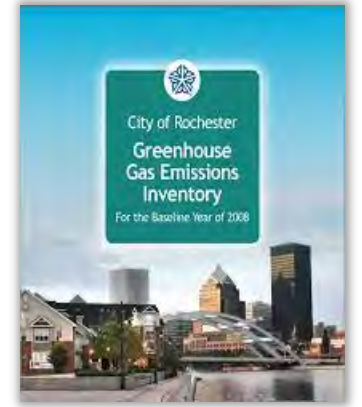
- Registered = making a commitment
 - Local gov't passes a formal municipal resolution adopting the 10-point CSC Pledge
- Certified = leaders who've made concrete progress
 - Accumulate points through documented actions to achieve Certified, Bronze, Silver or Gold levels
 - 1-10 points per action, 138 total possible actions
 - Range of action types: planning, policies, outreach, implementation, etc.



Certification Priority Actions



- 1.1 Pass a resolution adopting the **CSC Pledge**
- 1.2 Create a community **CSC task force** focused on climate mitigation & adaptation
- 1.3 Appoint a **CSC coordinator**
- 1.4 Create an **internal green team** focused on climate mitigation & adaptation
 - 2.1 Develop a government operations **GHG emissions inventory**
 - 2.2 Develop a community **GHG emissions inventory**
 - 2.3 Establish a government operations **emissions reduction target**
 - 2.4 Establish a community **emissions reduction target**
 - 2.5 Develop a government operations **climate action plan**
 - 2.6 Develop a community **climate action plan**
- 3.1 Conduct **energy audits** of local government buildings
- 7.1 Conduct a **vulnerability assessment**
- 7.3 Review existing community plans & projects to identify **climate adaptation strategies** & policies or projects that may decrease vulnerability



New for 2016: CSC Grants

- **Only municipalities** are eligible (counties, cities, towns, villages)
- Required local match is **50%** of eligible project costs
- **\$11 million for two major project categories:**
 - 1) \$10.5 million for *Climate Protection Implementation Projects*
 - Construction of natural resiliency measures, reduction of flood risk, etc.
 - Reduction of GHGs: alternatives to driving or recycling of food waste
 - 2) \$500,000 for *Climate Smart Communities Certification Projects*

Cleaner Greener Communities

- 2011-2016: administered by NYSERDA
- Goals: Establish sustainable land use policies
 - Guide infrastructure investment
 - Promote sustainable growth
- Phase I - \$10 M for 10 [Regional Sustainability Plans](#)
 - Planning teams led by a municipality
 - Assessed current greenhouse gas emissions and energy use
 - Assessed available natural resources and economic assets, liabilities, and opportunities



Cleaner Greener Communities

- Phase I - [Regional Sustainability Plans](#) (cont.)
 - Set targets for energy supplies, transportation, waste and water mgmt., land use, housing, agriculture, economic development, and open space
 - Developed a plan outlining the short- and long-term actions the region can take to achieve targets and goals
- Phase II - [\\$90M in Smart Growth Grants](#)
 - Most for large-scale implementation projects
 - E.g., bus rapid transit, digester, and mixed-use, LEED-ND-type developments
 - Also grants for, e.g., integrating sustainability into comprehensive plans, streamlined EV and PV permitting



Relationship between Climate Smart Communities (CSC) and Clean Energy Communities (CEC)

Climate Smart Communities

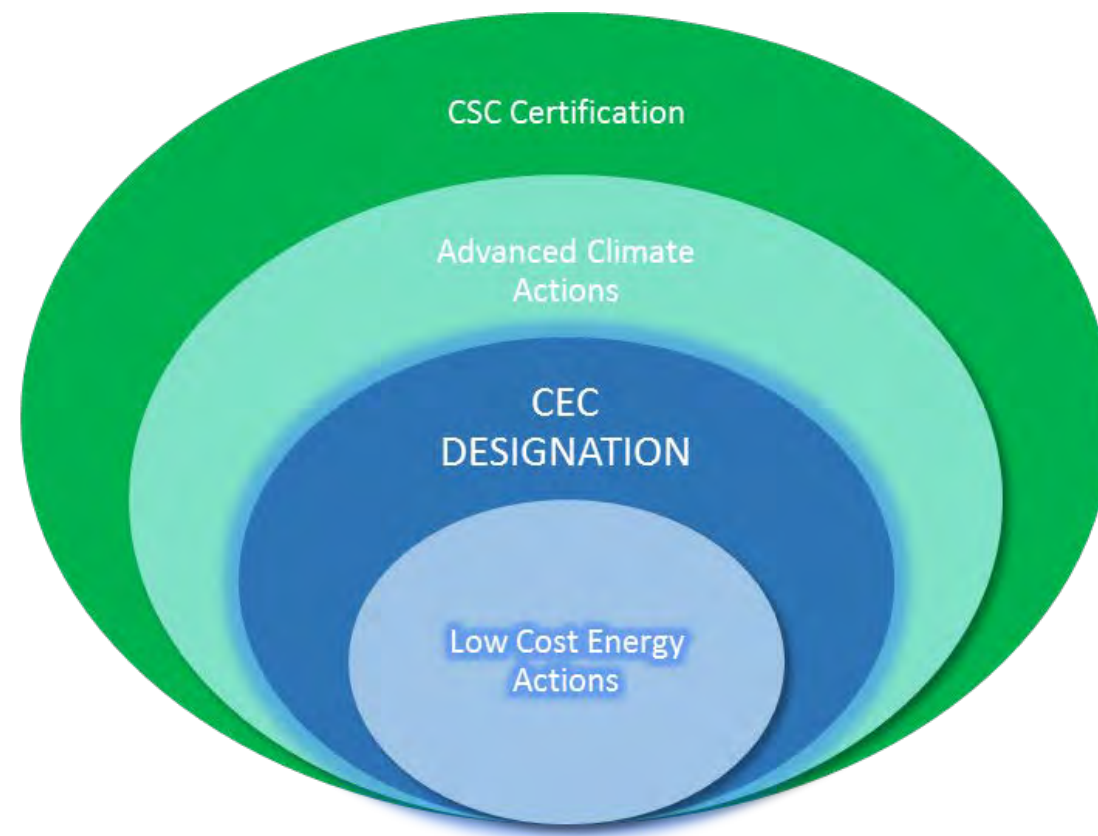
- Comprehensive climate program
- 138 unique certification actions
- Accumulate points toward certification
- Grants available for select actions

Clean Energy Communities

- Focused on clean energy
- 10 High-Impact Actions
- Complete 4 actions to be designated
- Designated = gain access grant funding

➤ **Complementary programs**

➤ **Most CEC actions correspond w/ CSC certification actions**



Clean Energy Communities Program

An open enrollment program that provides **rewards and recognition** to local governments that demonstrate clean energy leadership

STEP 1: BECOME A CLEAN ENERGY COMMUNITY by completing four out of ten high-impact actions designed to save money, foster a vibrant economy, and improve the environment. One action must be completed after June 1, 2016.

STEP 2: ACCESS GRANT FUNDING with no local cost share to support additional clean energy projects.

Dedicated and knowledgeable local coordinators are available to assist communities as they implement high-impact actions including free on-demand technical support, step-by-step guidance, case studies, model ordinances, RFPs, etc.

Clean Energy Communities: 10 High-Impact Actions

- 1) Benchmarking
- 2) Clean Energy Upgrades
- 3) LED Street Lights
- 4) Clean Fleets
- 5) Solarize
- 6) Unified Solar Permit
- 7) Energy Code Enforcement Training
- 8) **Climate Smart Communities Certification**
- 9) Community Choice Aggregation
- 10) PACE Financing



Thank You!

- Office of Climate Change
- NYS Department of Environmental Conservation
- 625 Broadway
Albany NY 12233-1030
- climatechange@dec.ny.gov
- dazzle.ekblad@dec.ny.gov
- 518-402-8448



Connect with us:

Facebook: www.facebook.com/NYSDEC

Twitter: <https://twitter.com/NYSDEC>

Flickr: www.flickr.com/photos/nysdec



Department of
Environmental
Conservation

MA Sustainability Programs – Local View

Alicia Hunt

City of Medford, MA

Director, Energy & Environment

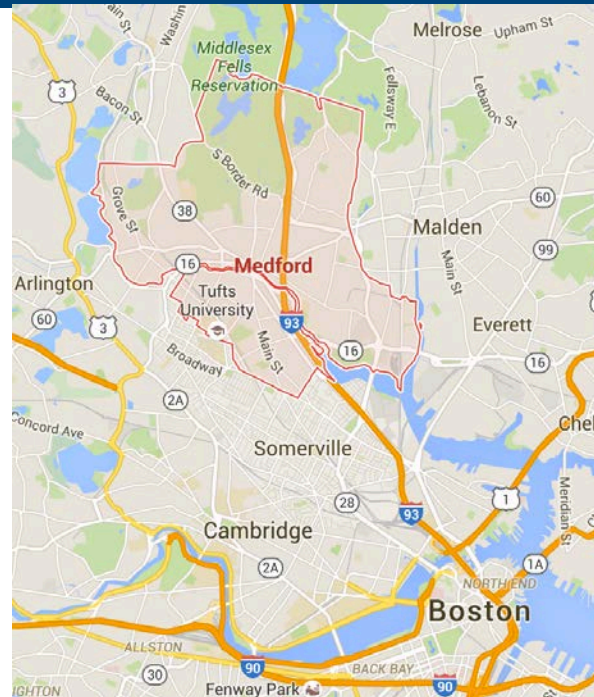
June 24, 2016



GO GREEN | Medford

City of Medford, MA

- Population 56,000
- 8.6 square miles
- 5 miles north of Boston
- Extremely dense population with 1/3 green space
- Socio-economically diverse
- Mayor & City Council
- Tufts University
- 4th English Settlement in North America, 1630



Medford Sustainability Highlights

- 1999:
 - 1st Green House Gas Inventory
 - Created Energy Task Force
 - Solar panels on school & City Hall
- 2001:
 - 1st Municipal Climate Action Plan in MA
- 2003:
 - Creation of Energy & Environment Office
- 2004:
 - Created Clean Energy Committee



Medford Sustainability Highlights

- 2009:
 - **Federal EECBG grant** – energy efficient measures in schools & hired Energy Efficiency Coordinator in 2010
 - Commissioned 100kW wind turbine at school complex – fully grant funded
 - Municipal building **energy audits through MA DOER**
- 2010:
 - Clean Energy Committee reconstitute as Medford Energy Committee
 - **Green Communities Designation and Grant**
- 2012:
 - Created Local Energy Action Plan with regional planning grant



Medford Sustainability Highlights

- 2014
 - **Federal Urban Waters Grant** – stormwater outreach & education
 - **Resiliency Technical Assistance and Implementation Grants** – MA DOER solar and battery storage at key buildings
- 2015
 - **Boston Metro Mayors Resiliency Task Force**
 - UN Compact of Mayors commitment
- 2016
 - Began working on vulnerability assessment



MA Green Communities Act

- Green Communities Act in 2008 provides innovation for energy efficiency programs and investment in renewables; **created the Green Communities Division in DOER**
- **4 Regional Coordinators** – know their communities well
- Created **Green Communities Designation and Grant Program**
- Implementation of the Regional Greenhouse Gas Initiative (RGGI)



Green Communities Program

- **Qualification Criteria – Designation**

1. Adopt as-of-right siting for RE/AE generation, RE/AE R&D, or RE/AE manufacturing
2. Adopt expedited permitting process
3. ***Create an Energy Reduction Plan to reduce energy use by 20% in 5 years***
4. Purchase only fuel-efficient vehicles
5. Minimize life energy cycle cost in new construction → adopt the Stretch Code

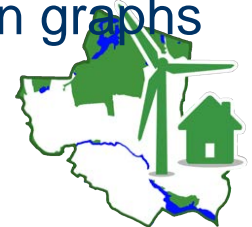
- **Grant Funding**

1. Energy Efficiency Projects
2. Renewable Energy Projects on municipal land



Green Community Program in Action

- Grants for Energy Efficiency projects – hot water heater upgrades, oil to gas heating system conversion, upgrades to indoor and outdoor LED lighting, weatherization
- New construction is steadily getting more energy efficient
- New vehicle purchases are energy efficient
- Measuring municipal energy use – need to measure to reduce.
- Mass Energy Insight – collects & presents energy data in graphs and tables



Regional Support - MAPC

- 12 Regional planning agencies – Metropolitan Area Planning Council
- Staff expertise on sustainability topics
- MAPC – Clean Energy, Environment, Collective Purchasing, District Local Technical Assistance, Regional Coalitions
- Consulting support for Local Energy Action Plan (LEAP)
- Metro Mayors Regional Coalition – extensive support on sustainability, climate vulnerabilities & resiliency planning



Community Clean Energy Resiliency Initiative

- \$40M grant program started in 2014
- Goal to provide off-grid capabilities for critical infrastructure
- e.g. Solar with battery storage or microgrid
- Municipalities requested additional technical help to apply
- Grant amounts were formula based
- 27 Communities requested & received free technical assistance in the fall of 2014.



Community Clean Energy Resiliency Initiative

- Medford received grant of \$833,000 end of December 2014
- Solar with battery storage at 2 locations
- Based on technical assistance report
- Entire year of 2015 reviewing contract with state
- State hired more technical assistance for implementation awardees
- Next step: hire consultant for feasibility study



Coastal Resilience Grant Program

- MA Office of Coastal Zone Management
- 78 eligible municipalities
- 5 eligible areas:
 - Vulnerability & Risk Assessment
 - Public Education & Communication
 - Plans, Bylaws, ordinances, standards changes
 - Engineering redesigns and retrofit for facilities & infrastructure
 - Green infrastructure coastal protection
- Grants \$60,000-\$300,000



Closing Thoughts

- Needs departments to work together – Planners, Engineers, Sustainability Directors
- Needs communities to work as regions – more and more great examples
- Urban Sustainability Directors Network as source
- Association of Climate Change Officers



Contact

Alicia Hunt

ahunt@medford.org

781-393-2137



GO GREEN | Medford

Sustainable Jersey



Donna Drewes

Co-Director,

Sustainable Jersey &

Sustainability Institute

The College of New Jersey



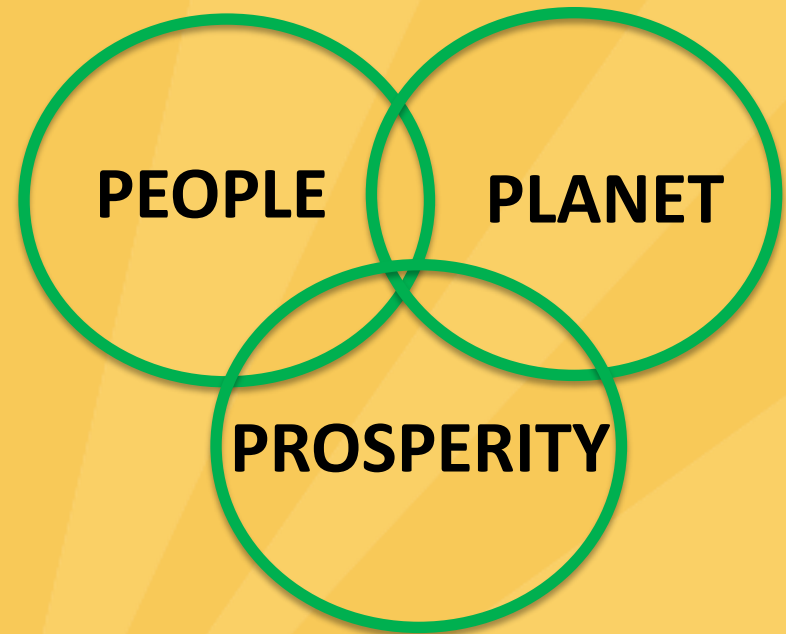
What kind of future do we want?



Students help the Mount Holly Green Team create a rain garden



Components of Sustainability



What is Sustainable Jersey?

Sustainable Jersey coordinates priorities, resources, and policy among public and private, state and local actors to help communities achieve their sustainability goals. Capped by prestigious certification, the program has three components.

Sustainable Jersey:

- Identifies **actions** to help municipalities and schools become more sustainable
- Provides **tools, resources, and guidance** to make progress
- Provides access to **grants and funding** for municipalities and schools



Sustainable Jersey Communities



New Jersey Government

566 Municipal Governments

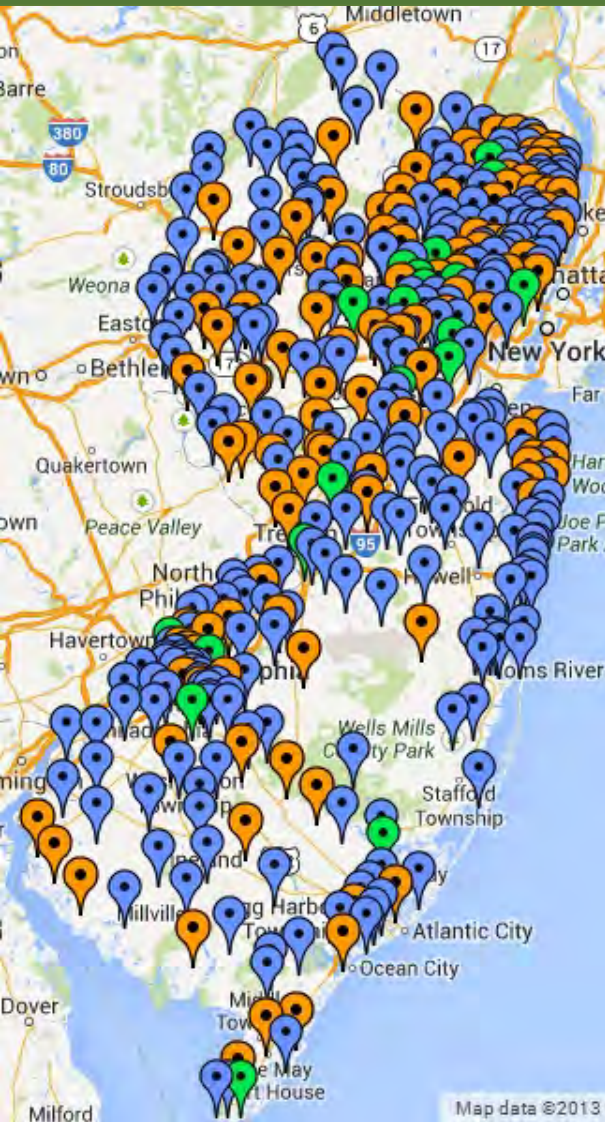
- Land Use Planning and Zoning
- Development
- Public Health and Safety
- Education
- Solid Waste and Recycling
- Water and Wastewater
- Anything Not Preempted by State and Federal

Local Governments Vary Greatly

- Population Size: 275,000 to <100
- Dense Urban to Rural
- Capacity: Sophisticated Professional Government to 1 Part-time Employee



Participating Communities



- Program launch: February 2009
- 437(78%) NJ municipalities participating
- 88% of NJ's population lives in these communities
- In 2015- 193 municipalities certified:
 - 160 towns at bronze level
 - 33 towns at silver level
- June 2016 - 111municipalities applied for certification (26 new)



Certification Steps

1. Pass a resolution; register municipality online
2. Form Green Team
3. Implement actions to score 150/350 points
4. Submit documentary evidence for each action
5. Certification awarded after review and verification



Green Teams



- Mandatory program action
 - Formally established by municipality or school to guide certification efforts
-
- Hundreds of Green Teams formed throughout the State, thousands of Green Team members
 - Revolutionary model of community directed leadership for sustainability



Actions: Prosperity, Planet, People

PROSPERITY

| ENERGY EFFICIENCY | POINTS |
|-----------------------------------------|--------|
| Energy Audits for Municipal Facilities* | 20-50 |
| High Efficiency Municipal Buildings | 10-20 |

PLANET

| FOOD | GREEN DESIGN | POINTS |
|------------------------------------|---------------------------------------------------|--------|
| Farmland Preservation | Green Building Policy/Resolution | 5 |
| Food Production | Green Building Training | 5 |
| Planning for Local Food | Green Design Commercial and Residential Buildings | 5-20 |
| Support Local Food | Green Design Municipal Buildings | 10-20 |
| LOCAL ECONOMIES | GREENHOUSE GAS | |
| Buy Local Programs | Municipal Carbon Footprint* | 10 |
| Green Business Recognition | Community Carbon Footprint | 10 |
| Green Jobs/Economic Incentives | Climate Action Plan | 10 |
| | Wind Ordinance | 10 |
| OPERATIONS AND MAINTENANCE | INNOVATIVE DEMONSTRATION PROJECTS | |
| Green Fleets* | Geothermal | 10 |
| Adopt Behavioral Policies | Green Roofs | 10 |
| Green Purchasing Programs | Raingardens | 10 |
| Grounds and Maintenance | Solar | 10 |
| | Wind | 10 |
| | Other | 10 |
| ARTS/CULTURE/HISTORIC PRESERVATION | LAND USE & TRANSPORTATION | |
| Historic Preservation | Sustainable Land Use Pledge* | 10 |
| Strengthening School Architecture | Complete Streets Program | 20 |
| | Municipal Planning & Zoning Self-Assessment | 10 |
| | Sustainability Master Plan Revision | 20 |
| COMMUNITY PARTNERSHIPS | NATURAL RESOURCES | |
| Create Green Team* | Natural Resource Inventory* | 20 |
| Community Education and Outreach | Water Conservation Ordinance* | 20 |
| Energy Outreach and Incentives | Conservation Easements | 10-15 |
| Education for Sustainable Living | Environmental Commission | 10 |
| School-Based Energy Conservation | | |

PEOPLE

- Participants choose from the menu of 100+ actions to accumulate the required points
- Actions created by 23 issue-based Task Forces
- 12 Priority Actions:
 - Energy Tracking & Management
 - Inventory & Upgrade All Buildings
 - Green Business Recognition Program
 - Fleet Inventory
 - Climate Adaptation: Flooding Risk
 - Municipal Carbon Footprint
 - Sustainable Land Use Pledge
 - Natural Resource Inventory
 - Prescription Drug Safety and Disposal
 - Diversity on Boards & Commissions



Actions

- Concrete steps municipalities can implement to become certified and more sustainable; actions include:
 - Ordinances
 - Programs and Plans
 - Policies and procedures
 - Retrofit or renovation of facilities



Certification Requirements

150

Bronze

- Total of at least 150 points
- Mandatory Green Team
- Implement 2 of 11 priority actions
- Actions completed in 6 of 19 categories

350

Silver

- Total of at least 350 points
- Mandatory Green Team
- Implement 3 of 11 priority actions
- Actions completed in 8 of 19 categories

Tools, Training and Guidance

Who to Involve

Timeframe

Project Costs

Why Important

What to Do

Submission
Requirements

Spotlight

Resources

- Each “action” comes with a detailed tool and step by step “how to” directions
- Access to free Sustainable Jersey workshops, trainings, webinars and resource center (CEUs provided)
- Training sessions showcase successful municipalities



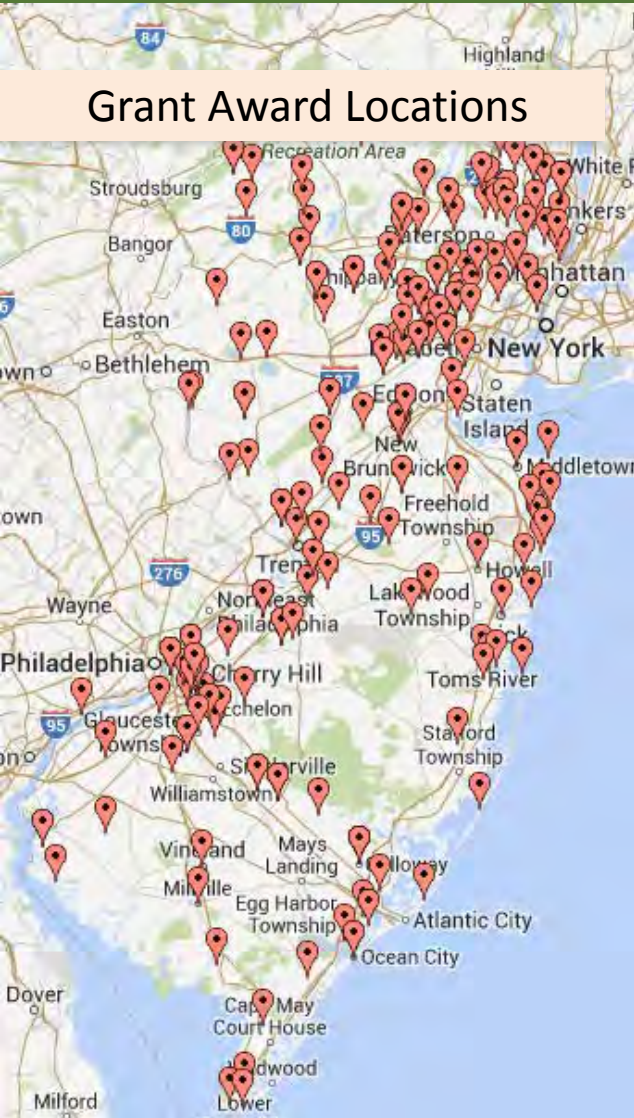
Certification Benefits

- Save money. Get money.
 - Implement actions that lead to cost savings (energy, water, garbage bills)
 - Improve efficiency, cut waste, stimulate local economy
 - Access to incentives and grants
- Gain access to training, tools and expert guidance.
- Get recognized. Promote your town.
- Conserve valuable resources. Protect the environment.



Small Grants Program

Grant Award Locations



Since 2009 Sustainable Jersey has awarded 433+ grants ranging from \$1,000 capacity building grants to \$35,000 project grants. By April 2016, over **\$2,663,000** will have been awarded.

Funding Provided By:

- PSEG Foundation
- New Jersey Department of Health
- Gardinier Environmental Fund
- New Jersey Education Association



Planning Focus Areas

- **Land Use Planning and Transportation**
 - Complete Streets
 - Bike/Pedestrian Plans
 - TOD
 - Overarching Sustainability Plans
 - Green Building and Environmental Sustainability Master Plan Element
 - Health In All Policies
 - Farmland Preservation and Open Space Plans
- **Economic Development**
 - Creative Placemaking Plans
 - Community Asset Mapping
- **Green House Gas**
 - Climate Action Plans
 - Energy Master Plans
 - Municipal Carbon Footprints



Resiliency Program

“To help municipalities strengthen their resiliency to the impacts of climate change.”

- Research and Analysis
- Develop New Tools, Resources and Standards
- Outreach and Education
- Municipal Technical Assistance
- Monitor and Track Municipal Progress
- Network and Collaboration with Partners



Resiliency Program

Program Highlights

- Partnered with NJDEP, the National Wildlife Federation, Stevens Institute of Technology and others to assist communities with natural and nature-based strategies to mitigate flooding.
- Led state efforts in the development of **the Coastal Vulnerability Assessment**, a new tool for NJ municipalities (and upcoming action)
- **Climate Adaptation-Flooding Risks** resiliency and adaptation planning process with a flood visualization tool
- Supported development of a new program of resiliency actions.



Building the Movement

National Network of Statewide Local Sustainability Programs

Report -- *Statewide Change, One Community at a Time: A Comparative Study of Collaborative State-Local Sustainability Programs*

Overview of 12 state wide based energy or sustainability programs.

•To view the Statewide Sustainability Report, visit <http://bit.ly/StatewideChange>.

Programs/States include:

Minnesota GreenStep Cities, Sustainable Maryland, Sustainable Pennsylvania, Wisconsin Green Tier Legacy Communities and Sustainable Jersey, Green Cities-California, Clean Energy Communities (CT), the Florida Green Building Coalition, Massachusetts Green Communities, Michigan Green Communities, Climate Smart Communities (NY) and Go Green Virginia

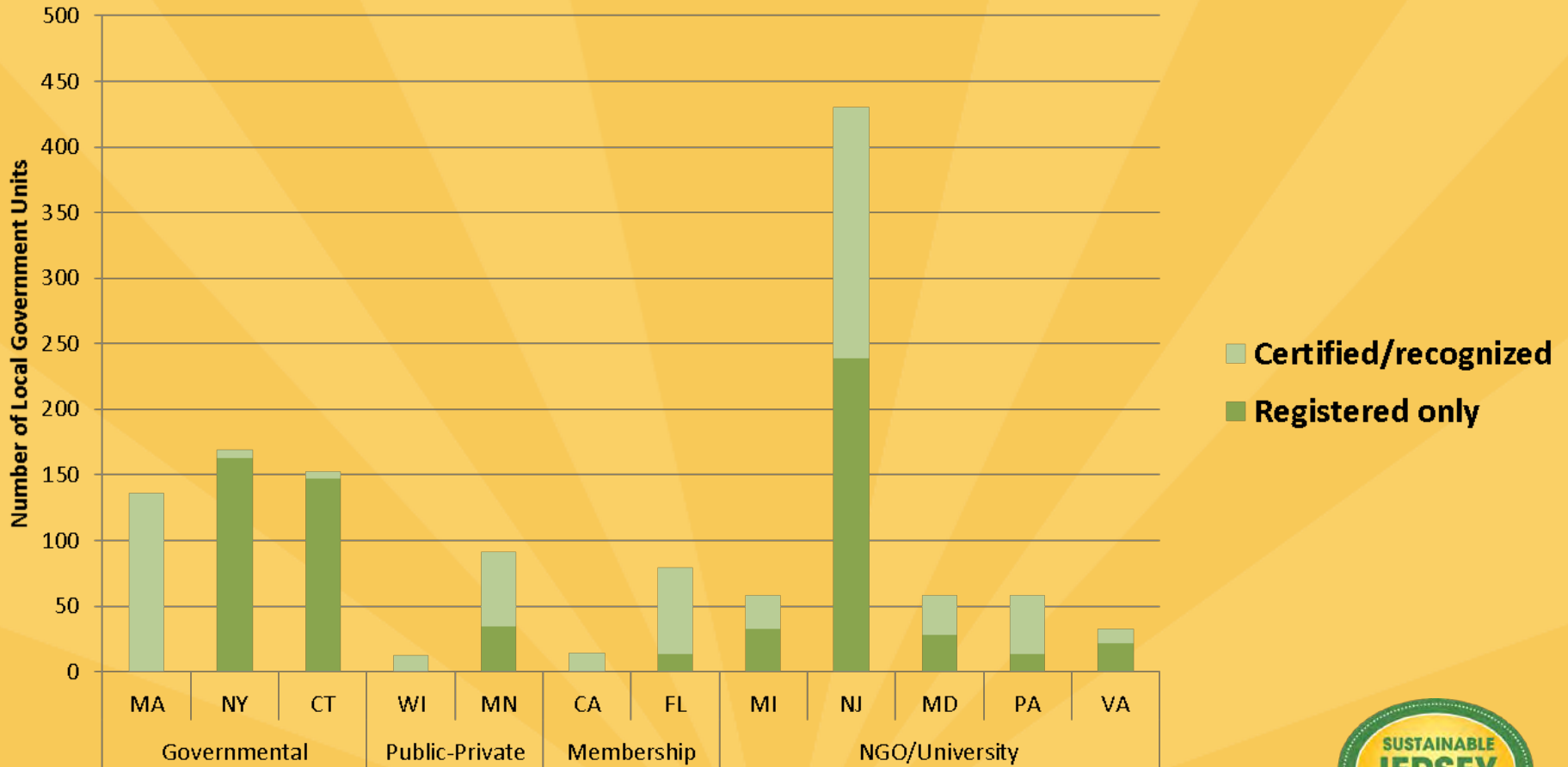
Exploring the creation of a national network of certification/rating programs that operate on a statewide level.



Building the Movement

Local Government Participation

National Network Report



Presenters

Dazzle Ekblad, Climate Policy Analyst, Office of Climate Change, New York State Department of Environmental Conservation, Albany, NY
dazzle.ekblad@dec.ny.gov P: [518-402-8448](tel:518-402-8448)

Alicia L Hunt, Director of Energy & Environment, City of Medford, Medford, MA, ahunt@medford.org, P: [\(781\)393-2137](tel:781-393-2137)

Jennifer Czysz, AICP, Assistant Director, Nashua Regional Planning Commission, Merrimack, NH - JenC@nashuarpc.org, P: [603.424.2240](tel:603-424-2240) x31

Donna Drewes PP/AICP, Co-Director, Sustainability Institute at The College of New Jersey, Ewing, NJ drewes@tcnj.edu P: [609.771.2833](tel:609-771-2833);

Joanna Nadeau, AICP, Director of Community Programs, Audubon International, Troy, NY joanna@auduboninternational.org P: [518-767-9051](tel:518-767-9051) x124

