



# Mapping Food Access as Part of a Statewide Food Strategy

APA PLANNING WEBCAST SERIES

July 14, 2017



# Agenda

1. Introductions
2. Planners4Health Program and RI-APA
3. Intro to food systems planning and mapping
4. Food planning in Rhode Island
  - RI Food Policy Council
  - RI State Food Strategy
  - HEZ initiative
5. The RI Food System Map
  - Background
  - Process
  - The map
  - Map applications
6. Next steps and conclusions
7. Q+A

# Introductions



Shayna Cohen  
Senior Consultant  
KK&P



Ben Kerrick  
Consultant  
KK&P



Jeff Davis  
Awards Chair  
APA Rhode Island



Leo Pollock  
Network Director  
RI Food Policy Council



Sue AnderBois  
Director of Food Strategy  
Rhode Island

# Planning in Rhode Island

## What makes us different?

- **Yes, we're small . . . But that can be a good thing!**
- **Statewide coordination is more like a large city or county**
- **Comprehensive Planning required for all 39 cities and towns**
- **We all know each other**
- **And we all know all of our local and state elected officials!**

*Though our socioeconomics can be stark for such a small place*



American Planning Association  
Rhode Island Chapter

# Planning for *Health* in Rhode Island

**PLAN4Health**  
An American Planning Association Project



**SOUTH KINGSTOWN:**  
DESIGNING A HEALTHIER COMMUNITY

**farm fresh**  
rhode island!

**RI Food**  
Policy Council

**OLNEYVILLE**

**HEALTH EQUITY**  
**ZONE**

## About KK&P

# Karen Karp & Partners

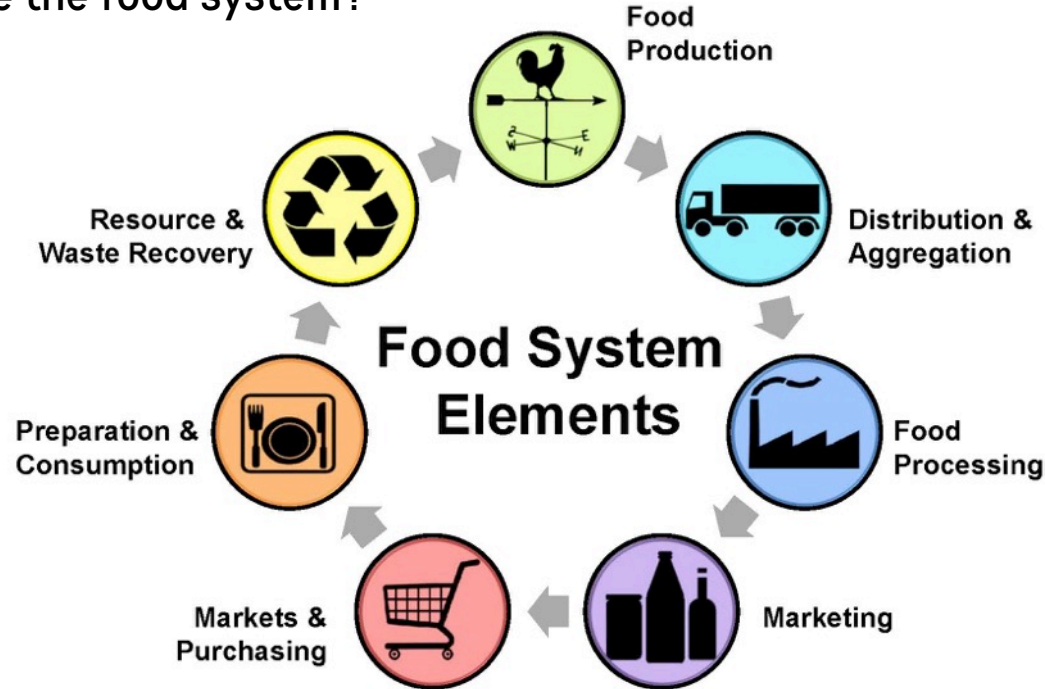
*Good food is good business.*

It's our job, our mission, and our commitment to help you connect the two. From designing regional sourcing strategies and sustainability plans to developing cutting-edge food curricula, we customize our approach to changing the food environment in your communities, marketplaces, or within your own organizations.

[kkandp.com](http://kkandp.com)

# Food Systems Planning

How do we define the food system?



*Adapted by Christy Shi, Center for Environmental Farming Systems.*

*From: Wilkins, J. and Eames-Sheavly, M. Discovering the Food System; An experiential learning program for young and inquiring minds. Cornell University, Departments of Nutritional Science and Horticulture. <http://www.discoverfoodsys.cornell.edu/>*

# Food Systems Planning

## Food Security

access to healthful, affordable, and culturally appropriate foods at all times

## Food Access

Includes both geographic/physical access and economic access

## “Food Desert” or Low-Income/Low-Access (LILA) Area

a low-income census tract where either a substantial number or share of residents has low access to a supermarket or large grocery store. In 2015, over 83 million Americans (27%) lived in a LILA area.

## The “Foodshed”

the geographic area from which a population center draws its food



## Planning for Healthy Food: A range of potential goals

- Access for the underserved and at-risk
- Healthy food options for all eaters
- Local and regional food systems
- Jobs, economic development, and placemaking
- Education and culture of healthy eating



## Planning for Healthy Food: A range of potential approaches

- Community/urban food production
- Farmers Markets and CSAs
- Farm to school
- Food policy councils
- Food policy coordinator/director
- Value chain coordinator
- Transportation initiatives
- Strategic land use planning and zoning
- School and institutional food procurement and policy
- Food assessments and plans
- Inclusion in comprehensive plans
- Connections between stakeholders
- Community education (“if you build it...”)
- Food site as destination
- Comprehensive planning and other planning efforts
- Farmland conservation



# Cultivating a Food Systems Planning Mindset

Where and how does food fit in?

Who are the eaters?

Where are the sites of opportunity?

- Medical providers
- Parks and open space
- Schools
- Emergency food resources
- Housing and mixed use developments
- Transportation nodes



## Food Systems Planning: Some observations

Everyone eats!

Trust and relationships are critical

An inherently cross-sector / systems-based approach

Crucial to engage a range of stakeholders

Supply chain diversity is key to resiliency





**Leo Pollock**  
Network Director  
Rhode Island Food Policy Council

# RI Food Policy Council



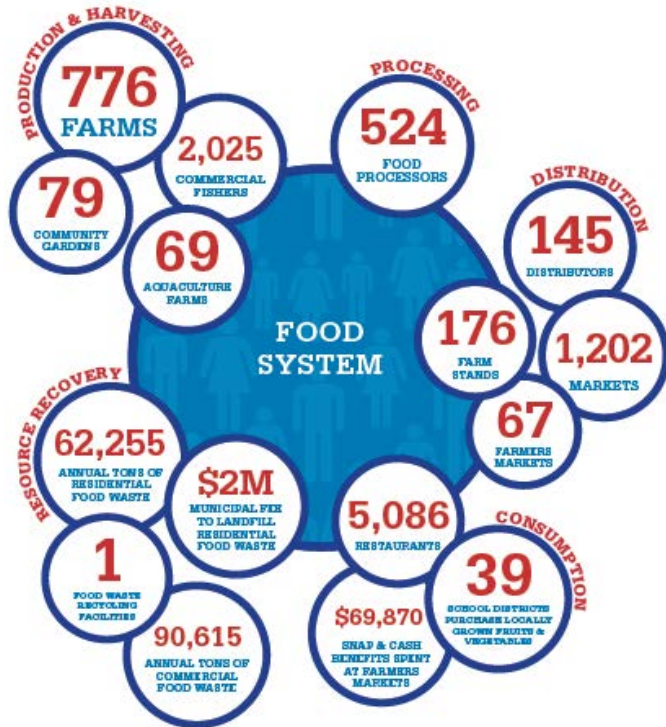
# Assessing the State of the State

- Food System Assessment (Karp Resources), November 2011
- Update to the RI Food Assessment: 2011 - 2016 and Beyond (KK&P), July 2016



# Rhode Island Fact Sheets

RHODE ISLAND FOOD SYSTEM  
2016 SNAPSHOT  
**RHODE ISLAND**  
POPULATION 1,052,587



RHODE ISLAND FOOD SYSTEM  
2016 SNAPSHOT  
**RHODE ISLAND**  
POPULATION 1,052,587



**DID YOU KNOW?**

Rhode Island saw an 11.2% increase in food system jobs, and a 3.2% increase in food system businesses over the past 5 years.

**STATE FOOD SYSTEM DATA**

BUSINESSES	JOBBS
7,820	66,770



# Local Agriculture and Seafood Act (LASA) Grants Program



## RI Mushroom Company West Kingston

Awarded: \$10,000

Small/Beginning Farmer:  
Capital Improvement



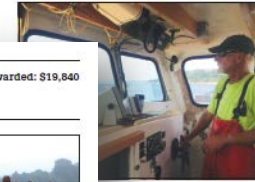
**KEY WORDS:** "This project will enhance the effectiveness of RI-grown agricultural products by its ability to compete in the mushroom RI facilitate the success and viability of the mushroom sector by creating a larger specialty mushroom community in the state, supporting and new sales channels in clearly defined

Bob DiPietro & Michael Hallock, Owners

## Jamestown Oyster Company Jamestown

Awarded: \$6,000

Small/Beginning Farmer:  
Capital Improvement



**KEY WORDS:** "Oysters are developing a market have a reputation as a quality product. in kind of aquaculture business & high to stimulate and help smaller growers to the decline of wild stocks (lobster and situra) is an alternative to replace some of wild production."

—Mark Goornet, Owner

## Young Farmer Network Providence

Awarded: \$19,840

Organization:  
Education/Promotion

**PROJECT:**  
Outreach & Education for  
Beginning Farmers

Inspired by the agrarian tradition of neighborhood collaboration once embodied by the Grange, the Young Farmer Network (YFN) addresses the unmet needs of beginning farmers by creating opportunities for social interaction and knowledge training. A grassroots organization dedicated to increasing the capacity for southern New England to produce environmentally, socially and economically sound food by supporting new farmers, YFN began as a series of informal events, run by volunteers, on host farms. The network has grown to over 300 members with organizers holding 30 events annually for new farmers. Their popular Young Farmer Nights program has provided the backbone for valuable communication and peer networking among farmers.

With their LASA funding, the YFN will expand upon their word-of-mouth successes and continue to become an organized, regionally recognized and formally established network. They will rent classroom space for their Short Course Program – four or five-week intensive technical training sessions taught in partnership with URI Extension, and plan to offer young and beginning farmers with limited income sources the ability to attend classes for free or at a reduced rate. The LASA funding will also help increase YFN outreach efforts, specifically by developing and printing promotional materials for their events and continuing to develop their website.



**IN HER OWN WORDS:** "Young and beginning farmers are the future of RI agriculture. As young farmers continue to establish and grow businesses in RI, it is important that there is organizational support that responds to their needs. Beginning farmers are recognized as increasingly important to growing a safe and healthy regional food system that can feed our communities in the future, especially as the average age of farmers is increasing and farmland is becoming less available. The YFN seeks to confront these obstacles by fostering a modern, relevant agricultural community filling in gaps in the historical support system of knowledge transfer from previous generations."

—Sarah Turkin, YFN Representative

# Food Matters Events





# A food strategy for Rhode Island



building a food system  
that benefits our  
families, businesses,  
and economy.

# Agenda



Food Strategy Process



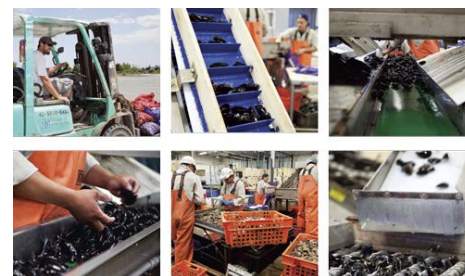
Core Themes of the Food Strategy



Integrated Focus Areas

# Food Strategy Process

- 🚢 Listening Tour ~ 150+ RI'ers
- 🚢 Rhode Island Food Summit – 350 RI'ers
- 🚢 Written Comment - ~40 RI'ers
- 🚢 Road Show with RIFPC - ~30 presentations
- 🚢 Research, Analysis, Regional Partnership





# Core Themes



# Preserve & Grow Thriving Fisheries & Agriculture Industries



## Agriculture:

- ✓ Expand Preservation of Active Agricultural Lands
- ✓ Enhance Technical Assistance
- ✓ Strengthen Job Training
- ✓ Enhance Staff at Key Support Agencies



## Fisheries:

- ✓ Collaborate on Strategic Infrastructure Investments
- ✓ Expand Seafood Marketing
- ✓ Increase Opportunities for Direct-to-Consumer Sales
- ✓ Encourage New Entrants



## Shellfish/Aquaculture:

- ✓ Implement the Shellfish Management Plan & Goals of Shellfish Initiative



# Sustain & Create Markets for RI Products



- ✓ Encourage Direct-to-Consumer Sales
- ✓ Connect Rhode Island products to Institutional Markets
- ✓ Support Strategic Infrastructure Investments
- ✓ Coordinate Tourism Messages on Food

# Develop & Maintain Climate For Food & Beverage Businesses

-  Identify, prioritize, and Tackle Regulatory Challenges
-  Assess & Implement Practices for Communications and Engagement on Processes & Regulations
-  Recognize & Celebrate Participants in RI's Rich Food Culture
-  Assess Capital Availability & Gaps
-  Fully Staff Key Regulatory Agencies to Foster Innovation

# Minimize Food Waste & Divert It from the Waste Stream



Source Reduction:  
Reduce the  
Volume of Surplus  
Food Generated



Connect  
Healthful,  
Potentially Wasted  
Food to Rhode  
Islanders in Need



Support Technical  
Assistance and  
Resources Needed to  
Divert Organic Waste  
from the Landfill

# Ensure Food Security for All Rhode Islanders



Food that Is Sufficient, Preserves Dignity & Joy, Is Healthful & Culturally Appropriate

- ✓ Reduce Food Insecurity from 11.8% - below 10% by 2020
- ✓ Lead a Hunger Taskforce of key stakeholders across the State
- ✓ Address Transportation Barriers to Access
- ✓ Maximize Participation in Federal Meal Programs
- ✓ Reduce Price of Healthful Food
- ✓ Support Community Garden Infrastructure



Diet-Related Disease and Food Education

- ✓ Ensure High Nutrition Standards & Education in Schools and Childcare Facilities
- ✓ Expand Partnerships with Public Health Allies
- ✓ Lead by Example with Workplace Wellness



# Health Equity Zone Initiative



## 10 Health Equity Zones Across the State:

- ✓ Innovative approaches to improve the social and environmental conditions of communities across the State
- ✓ Food Security, Opioids, Chronic Disease prevention, etc.



## Food Security Focus

- ✓ All focus on food insecurity & increased access
- ✓ Transportation Access
- ✓ Need for data/mapping tools

# The Rhode Island Food System Map: Background

## Farm Economy and Jobs in Rhode Island

### Rhode Island



1,243 farms  
2,055 farm operators  
1,869 farm workers  
\$19.9 million in farm payroll  
\$59.7 million worth of farm products sold

### Bristol County



42 farms  
66 farm workers  
56 farm operators  
\$638,000 in farm payroll  
\$2.7 million worth of farm products sold

### Kent County



126 farms  
146 farm workers  
187 farm operators  
\$2.1 million in farm payroll  
\$4.4 million worth of farm products sold

### Newport County



214 farms  
591 farm workers  
370 farm operators  
\$5.8 million in farm payroll  
\$14.6 million worth of farm products sold

### Providence County



425 farms  
443 farm workers  
\$3.4 million in farm payroll  
721 farm operators  
\$14.1 million worth of farm products sold

### Washington County

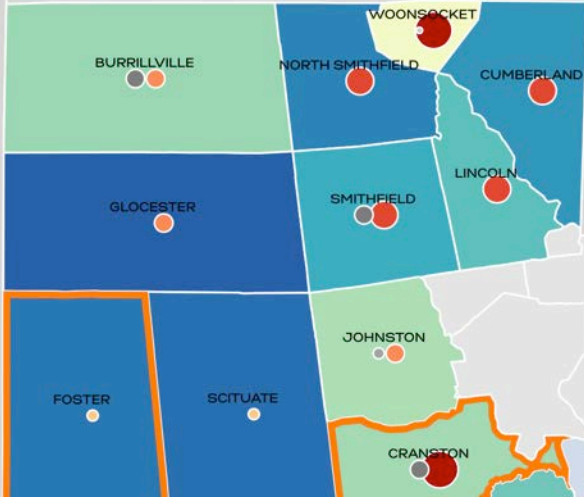


436 farms  
623 farm workers  
\$7.9 million in farm payroll  
721 farm operators  
\$23.9 million worth of farm products sold

# The Rhode Island Food System Map: Background

## Economy and Food Jobs

*Northern Rhode Island* excluding Providence area, Pawtucket and Central Falls

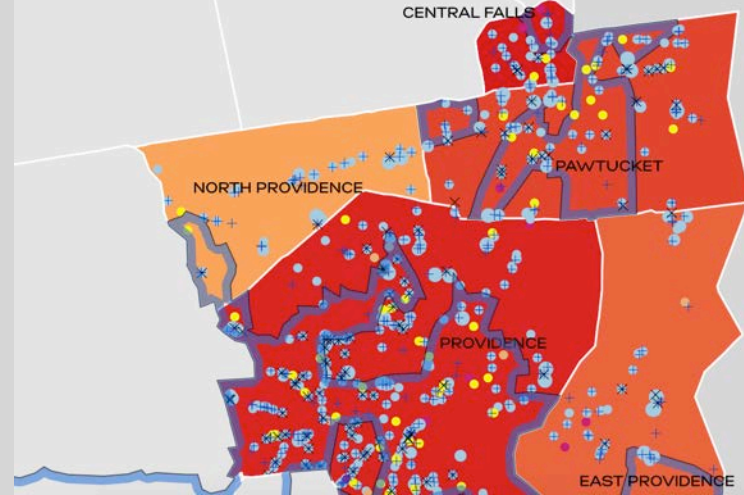


The data sources for **ECONOMY AND FOOD JOBS** maps are as follows:  
 Food Manufacturing and Food Service and Retail Jobs: U.S. 2012 Economic Census.  
 Median Household Income and Unemployment: American Community Survey 2010-2014 5-year estimates

Jobs figures are minimum estimates (see Methodology section for more details).

## Food Access and SNAP enrollment

*Providence area, Pawtucket and Central Falls*

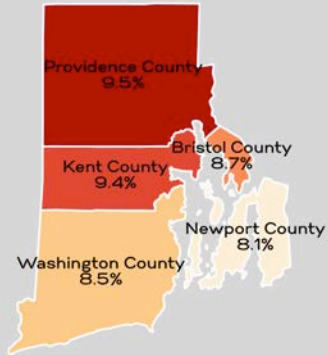


# The Rhode Island Food System Map: Background

## Public Health Indicators

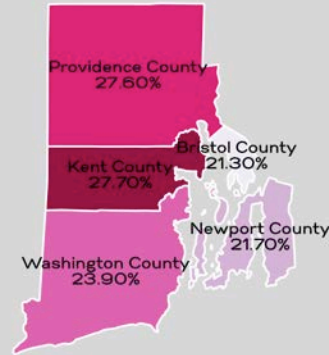
### Diagnosed Diabetes

Percentage of population



### Prevalence of Obesity

Percentage of population



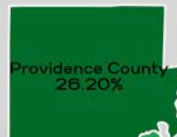
### Heart Disease

Deaths per 100,000

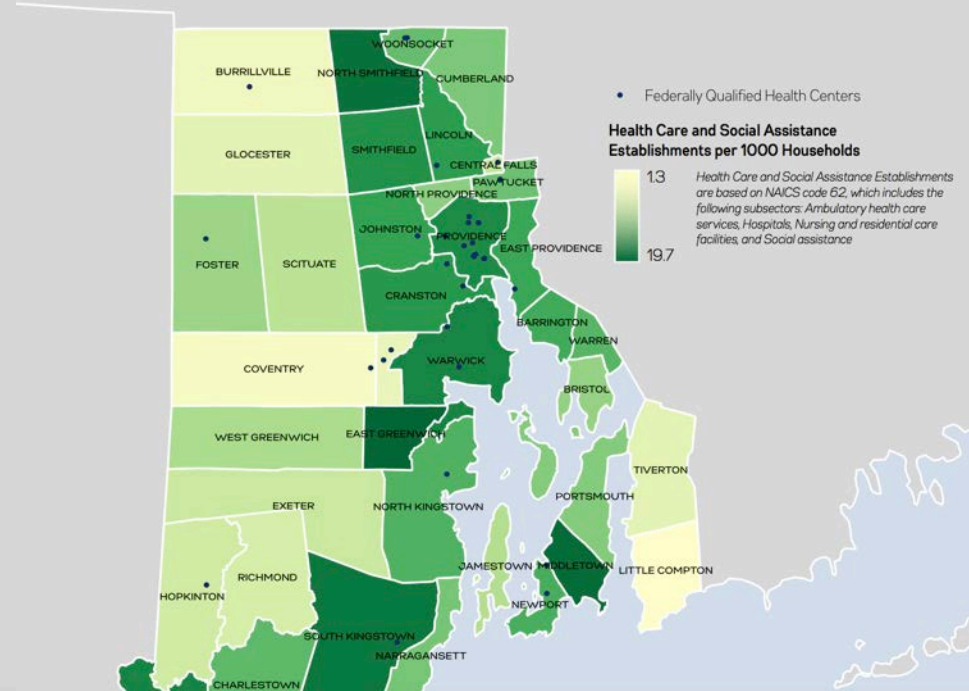


### Leisure Time Inactivity

Percentage of population



## Access to Health Care





## The Rhode Island Food System Map

*Let's launch the map!*

**Check out the map yourself!**

**[tiny.cc/rifoodmap](https://tiny.cc/rifoodmap)**

## **Resources**

APA Food Systems Knowledge Base: [planning.org/knowledgebase/food/](https://planning.org/knowledgebase/food/)

APA-Food Interest Group (FIG): [apafig.wordpress.org](https://apafig.wordpress.org)

Growing Food Connections: [growingfoodconnections.org](https://growingfoodconnections.org)

USDA: **Food Access Research Atlas** and **Food Environment Atlas**

## **Contact Info**

**Shayna Cohen**

KK&P

[shayna@kkandp.com](mailto:shayna@kkandp.com)

**Ben Kerrick**

KK&P

[ben@kkandp.com](mailto:ben@kkandp.com)

**Jeff Davis**

APA Rhode Island

[jdavis@horsleywitten.com](mailto:jdavis@horsleywitten.com)

**Leo Pollock**

RIFPC

[leo@rifoodcouncil.org](mailto:leo@rifoodcouncil.org)

**Sue AnderBois**

Rhode Island

[Sue.AnderBois@governor.ri.gov](mailto:Sue.AnderBois@governor.ri.gov)