

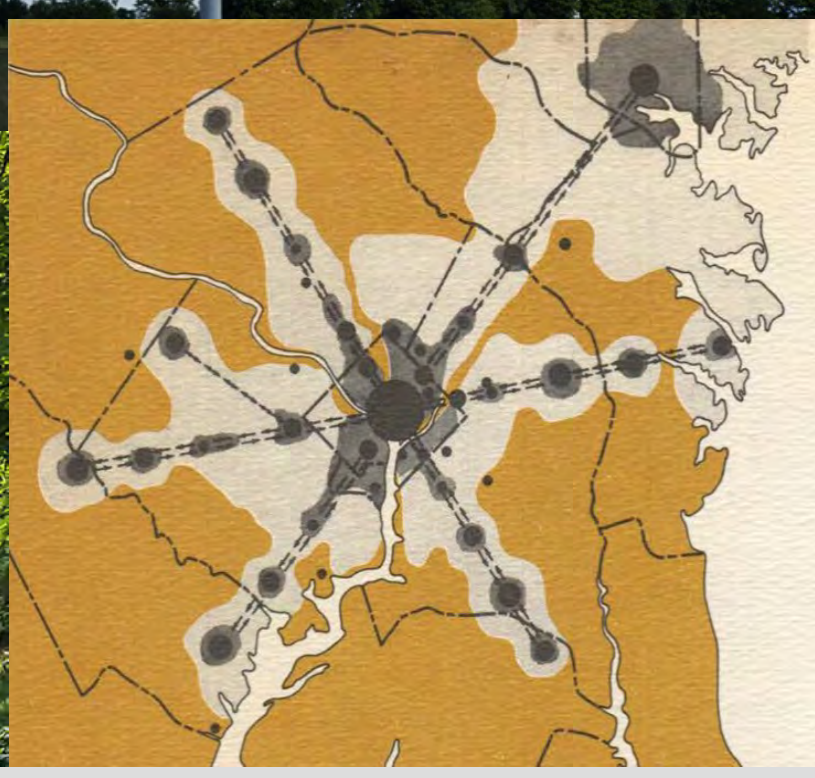
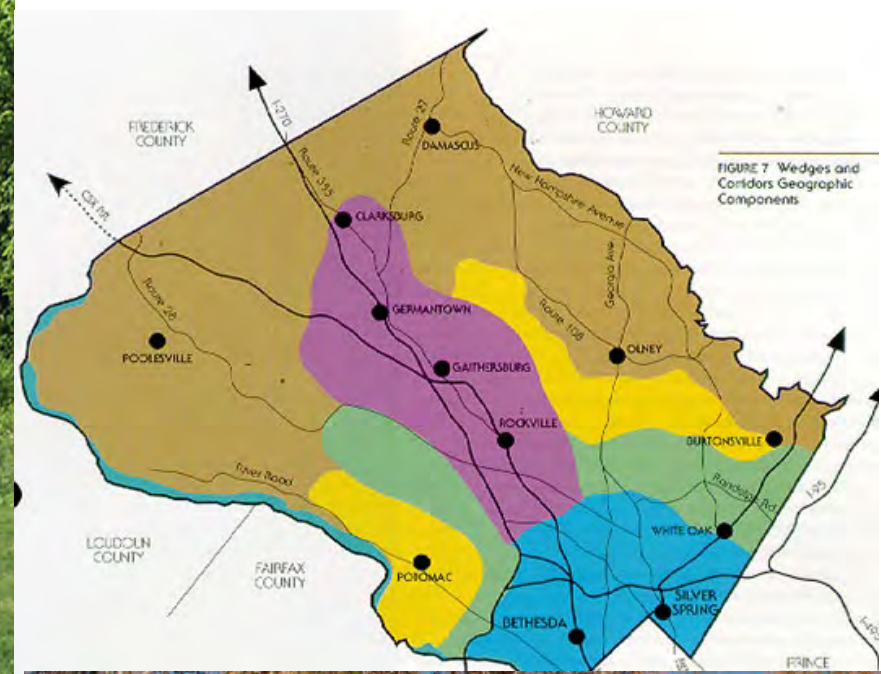
From Isolation to Inclusion: LGBTQ+ Communities in Planning & Equity Issues



American Planning Association
National Capital Area Chapter

Creating Great Communities for All





Montgomery Planning Department

04/24/2020

Thrive Montgomery Plan 2050

From Isolation to Inclusion: LGBTQ+ Communities in Planning & Equity Issues



The General Plan—What does it do?

- Guide future **growth & development**
- Address future **opportunities & challenges** affecting community quality of life
- Guide future **land use planning & development review**
- Spark changes to **zoning & regulations**
- Influence future **public & private** sector **investments**

HOW?

- **Prioritize high-level policy guidance** to influence future actions we may know now & actions *we don't know yet*
- Implemented over **multiple decades**
- By **multiple** public & private **entities**

The General Plan and Equity

- Montgomery County is carrying out a major update to its general plan, titled **Thrive Montgomery Plan 2050**
- Montgomery County's general plan will, for the first time, specifically tackle inequities and disparities in Montgomery County.
- Among our goals in updating the **Thrive Montgomery Plan 2050** will be to recognize and **make improvements on a long history of land use decisions** in Montgomery County that have historically created exclusionary neighborhoods.
- Developing a general plan that envisions a more equitable community is ongoing and will be an effort that requires **constant attention** and community engagement.
- We are committed to confronting the legacy of institutional racism and more specifically **inequities in the LGBTQ+ communities**.
- The vision of the general plan also will lead to more equitable planning policies.

Background and History

Latter Half of 20th Century:

- **1960s: General Plan**—landmark in planning history: emphasis on open space, clustering, & need for affordable housing in the suburbs
- Racial equity was not directly addressed in the original General Plan for the county



Update the Strategic Framework

Equity—
one of 3 pillars
for General Plan
Update



THRIVE
MONTGOMERY 2050
Let's Plan Our Future. Together.



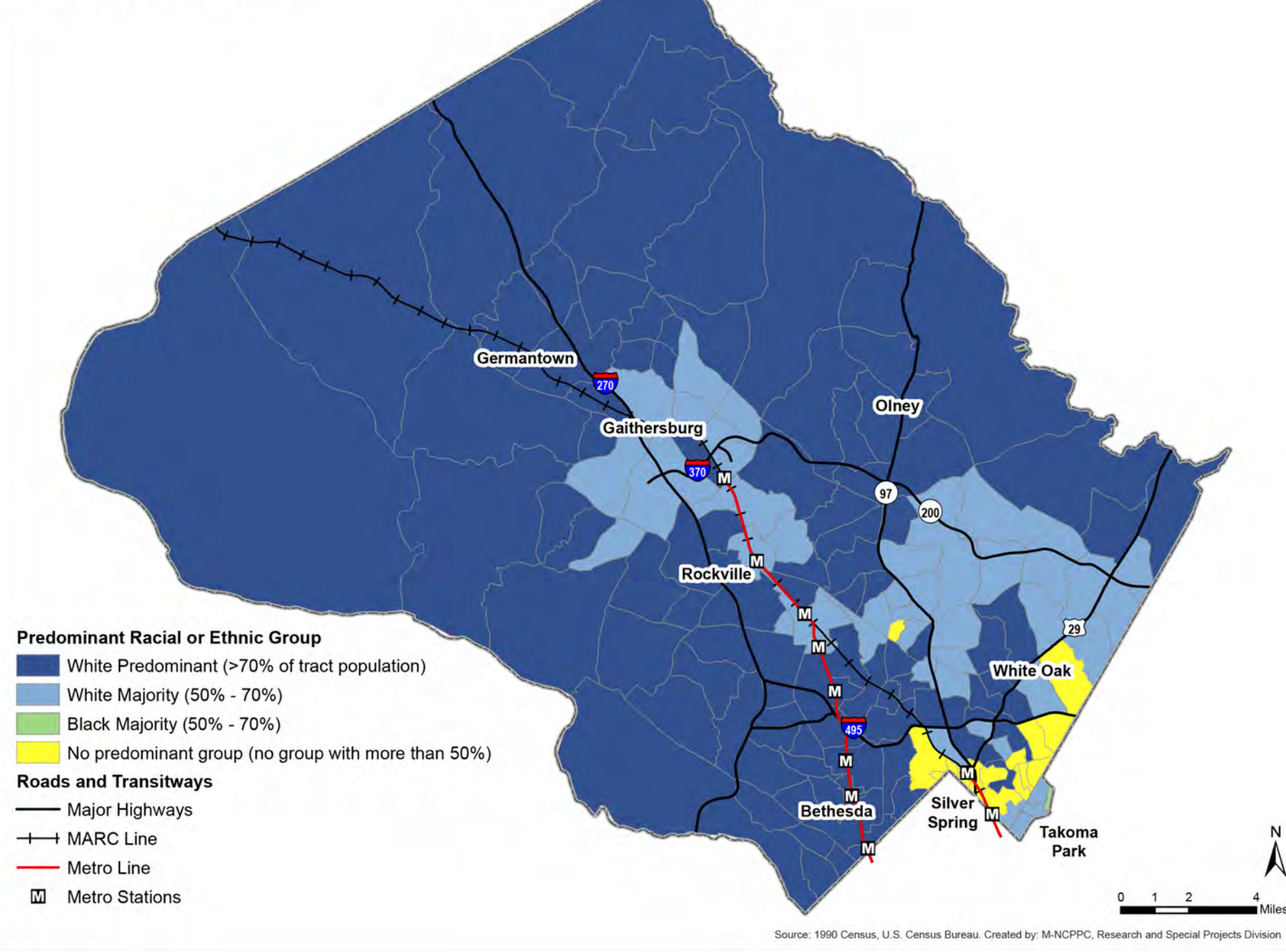
Community Engagement

- Engaging diverse communities typically under-represented in planning efforts.
- ***Outreach initiatives:***
 - Materials/presentations in Spanish & English
 - Targeted outreach to churches & other community organizations
 - Information easily accessible to commuters on Metrorail, bus shelters & buses
 - Distribution of information at schools
 - Unique tools such as visual recording artists

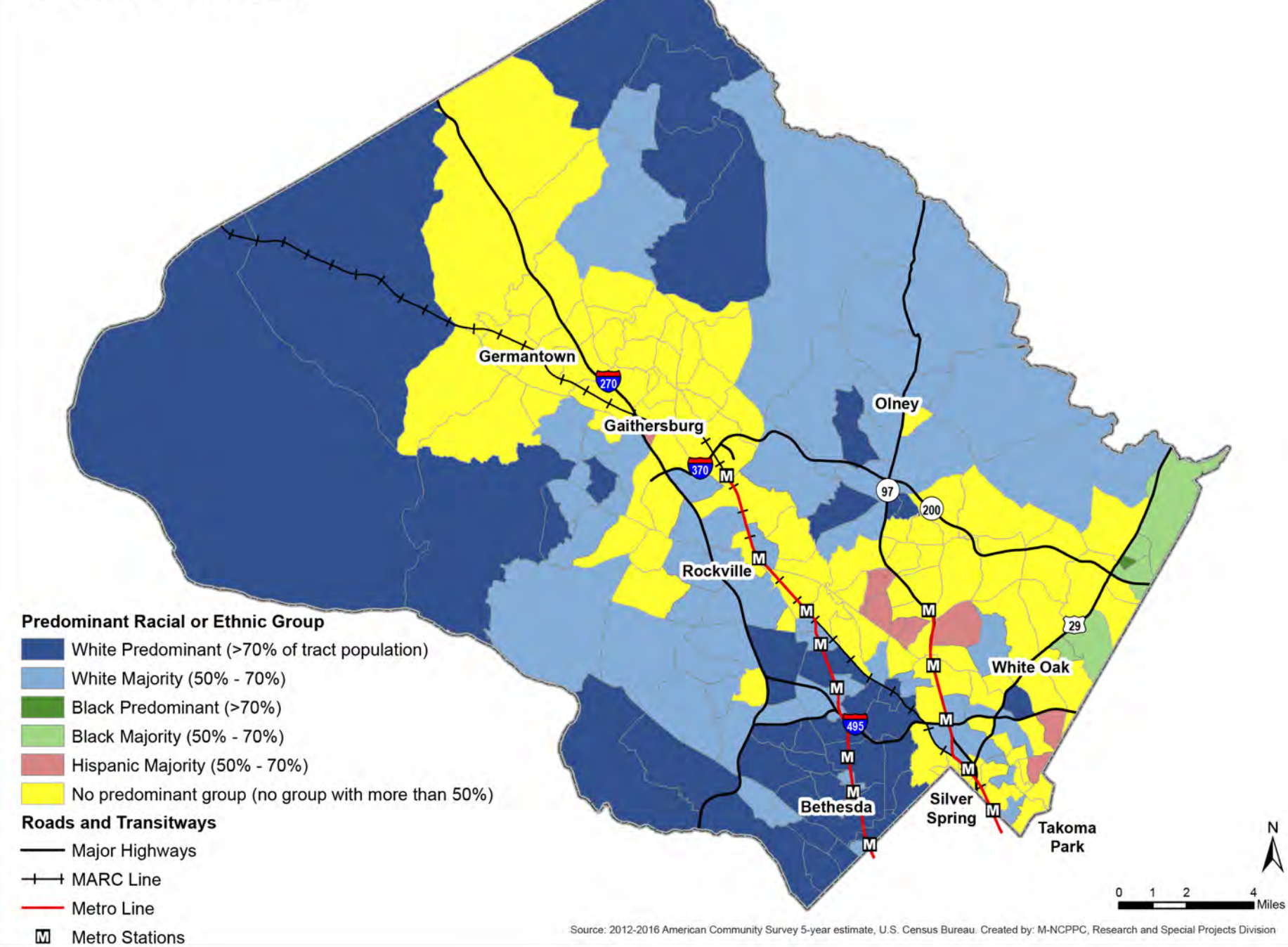


Diversity in Montgomery County Today

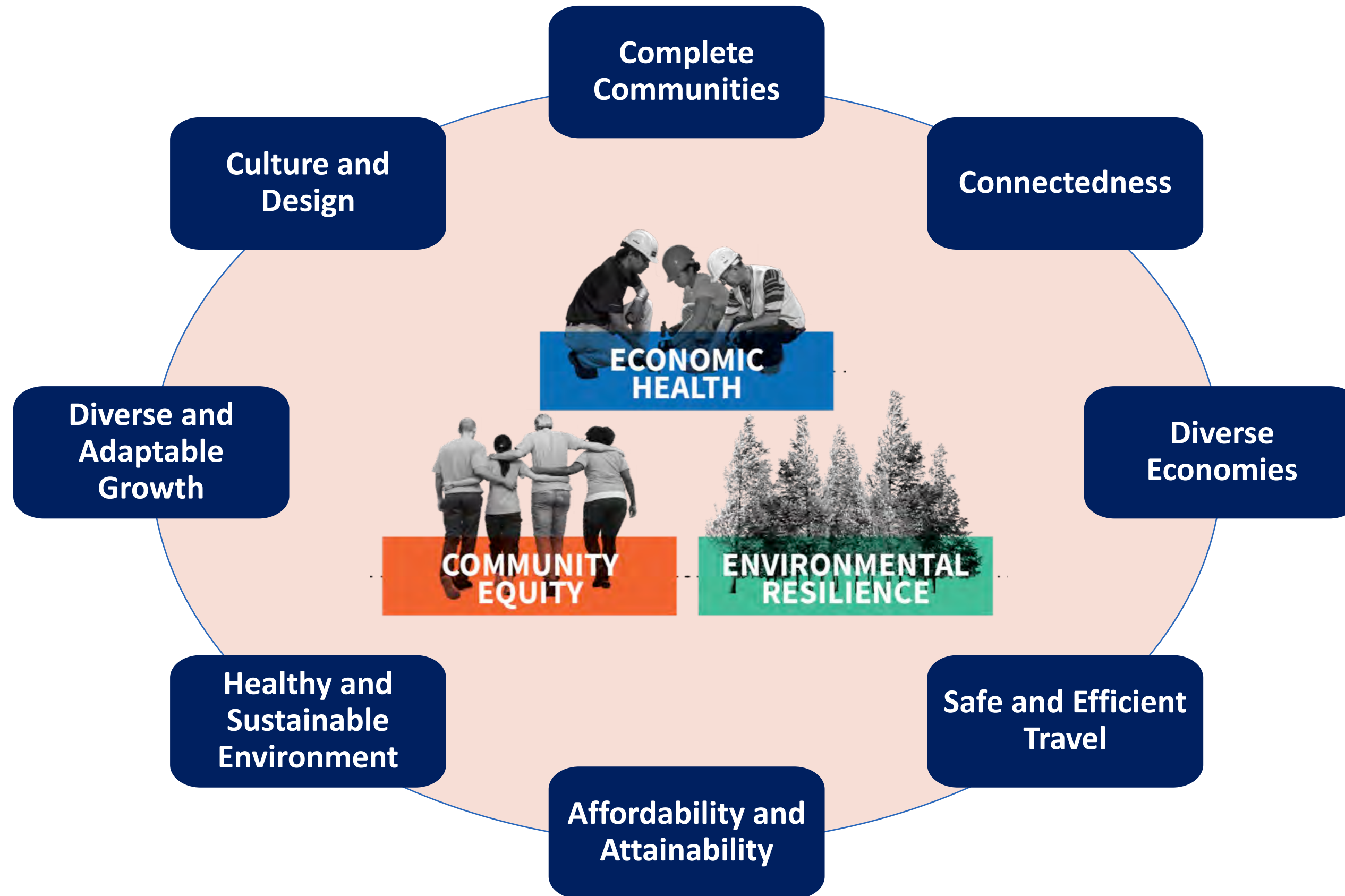
**Map 6. Predominant Racial or Ethnic Group, 1990
by Census Tract**
Montgomery County, Maryland



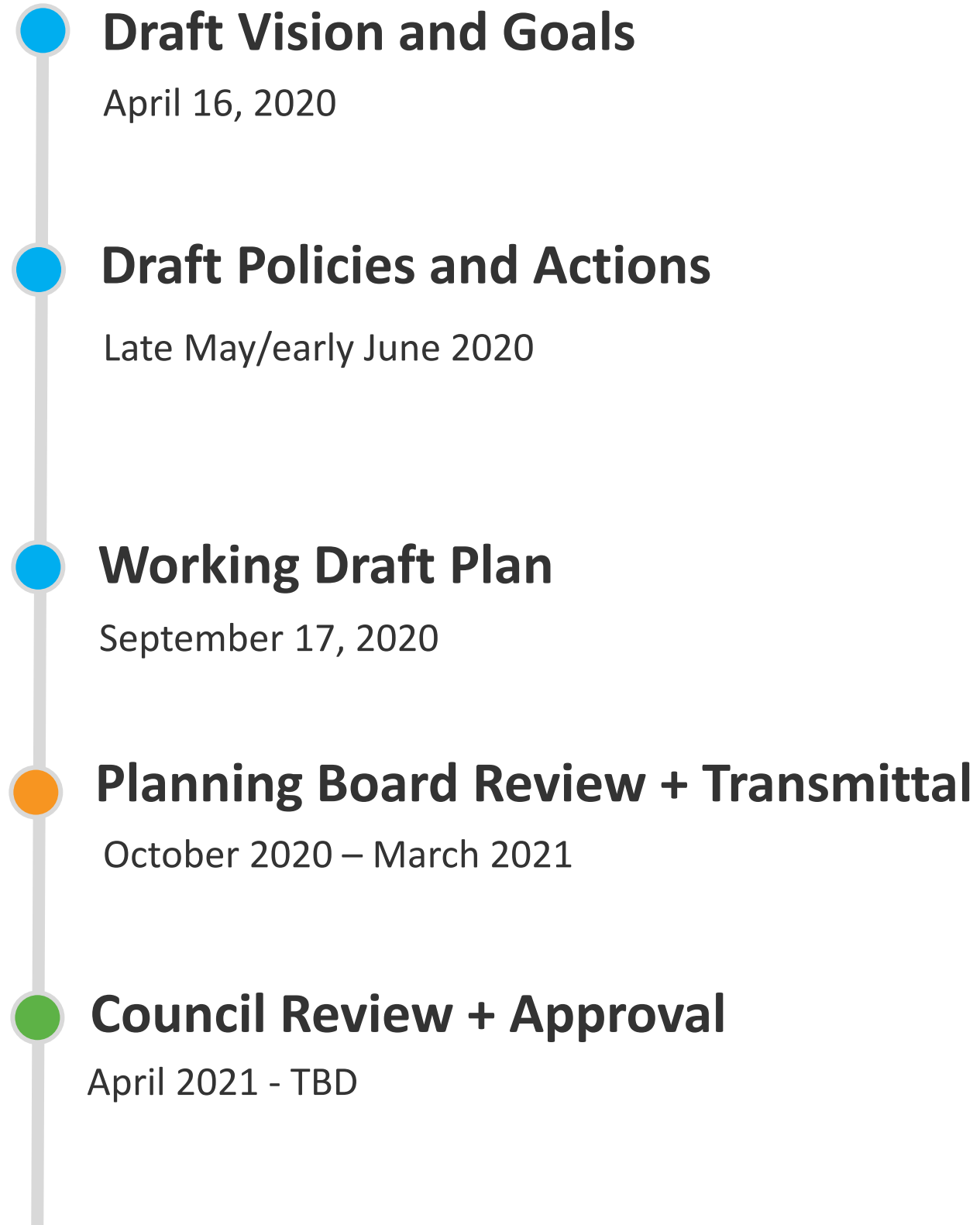
**Map 7. Predominant Racial or Ethnic Group, 2016
by Census Tract**
Montgomery County, Maryland



Consider the Diverse Issues and Outcomes



Timeline



What's Next

Upcoming Engagement Opportunities:

- **Future Webinars Related to LGBTQ Experience**
 - *Historic Preservation*
 - *Generations: LGBTQ Youth and Seniors*

Our Panelists



- **Eric Shaw** is an urban planning professional with extensive experience in establishing and leading cross sector, cross discipline and cross jurisdictional partnerships in the areas of community and economic development. He has been recognized for his work establishing strategic initiatives that support inclusive development and resilience in communities throughout the nation. He has held positions in the public and philanthropic sectors in Salt Lake City, Louisiana, Silicon Valley, and Miami. He is founder and principal of Know New Ideas Consulting, and most recently served as director of the Washington DC Office of Planning.

Our Panelists



- **Dr. Jeremy C. Wells** is an Assistant Professor in the Historic Preservation Program in the School of Architecture, Planning and Preservation at the University of Maryland, College Park. His research focuses on the psychology of heritage places; making the preservation enterprise more equitable, just, and resilient; and Innovative community engagement tools for preservation planners. Wells runs the web site, <http://heritagestudies.org>, to explore these topics with the goal of making historic preservation more human-centered.

Our Panelists



- **Kristen E. Jeffers** is the founder and editor-in-chief of The Black Urbanist multimedia platform, author of *A Black Urbanist* (second edition forthcoming), creator of the public speaking course *Plan to Speak* and 1/2 of the podcast *Third Wave Urbanism*, as well as a freelance writer, urban planner and advocate. She has presented at the annual Congress for New Urbanism, YIMBYTown and to communities around the US and Canada, using her personal story to illustrate what land use and planning really means and really does, plus encourage practitioners, both young and old in best practices.

Our Panelists



- **Yes Segura** is a Transportation Planner who is 1st generation El Salvadoran American, but also an openly Transgender Man. Yes's focus of planning work deals with equity & health within new mobility. Yes's graduate work heavily involved LGBTQ+ Planning and self-driving cars policy / urban design work. Yes has won multiple APA awards and an AICP award. Since then Yes has continued research + policy work within new mobility with a focus on equity.& health. Yes recently helped to establish the Health & Equity Subcommittee within the Autonomous Vehicle Washington State Workgroup + has presented at a United Nations Global Goals jam in Seattle.

Thank you!

- *To everyone that continues to fight for equitable communities.*
- *To everyone that helped to coordinate this webinar.*

Follow Montgomery Planning on social media:

- Twitter @montgomeryplans
- Facebook @montgomeryplanning
- Instagram @montgomeryplanning

#ThriveMontgomery

Planning and LGBTQ+ Spaces and Places

Eric D. Shaw



Is the Castro Getting Less Gay?

Ryan Levi - KQED Updated 3:41 pm PST, Friday, December 15, 2017



Gayborhoods aren't dead. In fact, there are more of them than you think.



or tps714.doubleverity.com...

LGBTQ Nightlife Dissipates in the District

March 15, 2019 by [Sean Fulmer](#) and [Steven Botsoe](#) — [Leave a Comment](#)

As students left campus for spring break, Georgetown's queer community lost another one of its dwindling LGBTQ nightlife establishments, calling into the question the state of safe spaces for queer individuals.

Washington, D.C., [has](#) the largest proportion of LGBTQ residents of any U.S. state or territory, according to a recent Gallup poll. With a community that makes up 8.6 percent of the population, the District enjoys some of the most progressive gay rights legislation in the country.



The 'gaytrification' effect: why gay neighbourhoods are being priced out



SATURDAY JUNE 9

KICK OFF 4:30PM

BE TRUE. BE YOU!

THE 2012 CAPITAL PRIDE PARADE ROUTE



VIEW STAND SPONSOR



OFFICIAL AUTO SPONSOR



21ST

20TH

19TH

18TH

17TH

16TH

15TH

14TH



13TH & U ST



R ST

R ST

R ST

Q ST

Q ST

DUPONT



CORCORAN ST

Q ST



START AT
AND P
(EDLINE STARTS)

ENTRY
IBLY = ★

W PORT PLACE

DUPONT
CIRCLE

P ST



P ST

CHURCH ST



O ST

100'S

200'S

300'S

NEW HAMPSHIRE

N ST

N ST

N ST

23RD

22ND

21ST

20TH

19TH

18TH

17TH

16TH

15TH

14TH







THE PRIDE STUDY

YOUR STORY. YOUR HEALTH.



VICTORY
FUND

Municipal Equality Index

A NATIONWIDE EVALUATION
OF MUNICIPAL LAW

2019



HUMAN RIGHTS CAMPAIGN



Equality Federation Institute



[HRC.org/MEI](https://www.hrc.org/mei) | [#MEI2019](https://twitter.com/MEI2019)

Black Same-Sex Households in the United States

A REPORT FROM THE 2000 CENSUS

by **Alain Dang**
and
Somjen Frazer

Data services by
Lopez & Cheung, Inc.





CROSSING THE STREET

Building DC's Inclusive Future Through Creative Placemaking







Architectural details on the left side of the building, including three large, arched windows on the second floor.

A row of six rectangular windows on the second floor of the central building section.

THE HOTEL
HOTELS & RESORTS
SOUTH BEACH

A red sedan parked on the street in front of the central building.

A dark SUV parked on the street in front of the right side of the building.

A dark sedan parked on the street in front of the right side of the building.

A circular manhole cover on the sidewalk in the foreground.

35



nokingsdc The lot we painted for Whitman Walker was 150' x 50'. Our 'GURL' took up 80' x 30'. We mapped it out digitally and then printed for reference.

#washington #dc #art #mural #grid #nokingscollective #whitmanwalker #fivesquaresdev #streetart #lizlot

148w



rockyoadrienne @jordanriverssss

148w 1 like Reply



125 likes

JUNE 20, 2017

Add a comment...

Post







WORK IT

SUP

43
44
45
46
47



WALT WHITMAN
JIMMY WALKER

free daily
papers

WALT WHITMAN
MARY WALKER



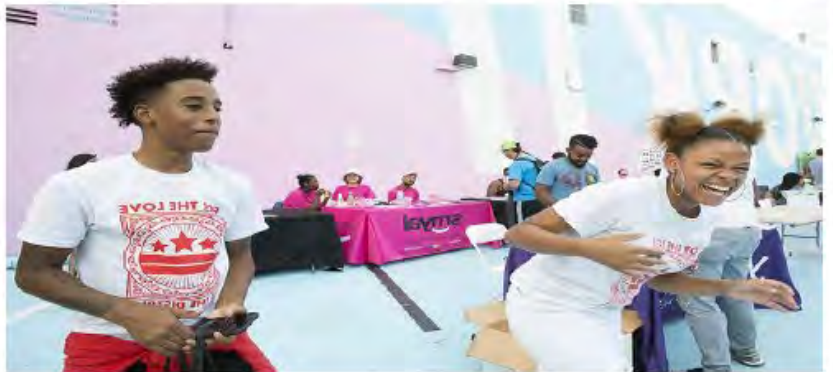
LEARD KARPAWICH, M.D. BUILDING



We see you
to reborn



The Lot at The Liz 14th Street NW Corridor



QUEER YOUTH BLOCK PARTY

A FREE COMMUNITY EVENT CREATING
SAFE SPACE FOR LGBTQ YOUTH!

Food | Music | Games | HIV Testing | Youth Performances & More!

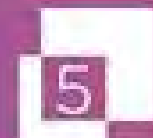
AUGUST 12, 2017
5 PM - 9 PM

THE LOT AT THE LIZ

1701 14TH STREET NW, WASHINGTON, DC

**NO KINGS
COLLECTIVE**

for



livesquares
development

+



Woman2Woman Health
We see you.

www.lizlot.com | [#LizLot](https://twitter.com/LizLot)

**PIZZERIA
VETRI**

REALTALKDC

YOU'RE INVITED TO...

A Fresh Coat of Fab

Get an insider preview of the newest Marai on 14th Street & hear about 'The Lot at The Liz' Summer Series!

Hosted by Urban Village Health and Developer Development in partnership with No Kings Collective, come explore our fabric store, view 3D-on an aerial that will be covering the Elizabeth Taylor Medical Center with redevelopment begins later this fall.

Join with one of the building with the artist behind the design, Peter Chang and Director of No Kings Collective, a local creative art agency, as they explain the art of our illustration for the project.

Learn more about the upcoming community shows, studio visits, The Lot at The Liz, and hear about the exciting future plans planned for the site.

Drinks and food provided will be served.

Tag us on social using **#LizLot**



WHEN:
June 28, 2017 | 5:30 pm - 8:00 pm

the block is hot.

Saturday, Aug 19th / 1701 14th St NW / 5-10 PM /
Music: Jerome Baker III & Domo / theblockishot.splashthat.com

















Waterbury ZEROSHARK

Waterbury ZEROSHARK

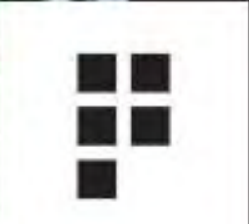
Waterbury ZEROSHARK

Waterbury ZEROSHARK

Waterbury ZEROSHARK

Waterbury ZEROSHARK

Waterbury ZEROSHARK





THE MISSION

SCOTT'S SWITH

STOP
HERE
ON
RED
EXCEPT
BICYCLES

SECRET

OPEN!

SALE

NOTE: BUTTER

NOTE: BUTTER

NOTE: BUTTER

NOTE: BUTTER

NOTE: BUTTER

NOTE: BUTTER

NOTE: BUTTER

NOTE: BUTTER

NOTE: BUTTER

NOTE: BUTTER

NOTE: BUTTER

NOTE: BUTTER



STOP
RED
EXCEPT
BICYCLES

14th St
1700

STATE
OF TEXAS

RESTAURANT

1507

Historic Context Statement for Washington's LGBTQ Resources

Prepared for:
District of Columbia
Office of Planning
Historic Preservation Office
1100 4th Street, SW, Suite 650



DC Inventory Properties

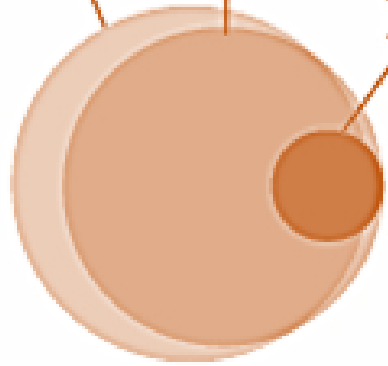
773

National Register Properties

607

National Historic Landmarks

74



National Register Properties



26,749 of the 143,000 properties in DC are historic





COMMUNITY WORKSHOP



THE HIPPO



THE EAGLE



LAMBDA RISING



AND MORE!

LGBTQ HERITAGE

COME SHARE YOUR STORIES!

Join us and help document the places and spaces of the LGBTQ community in Baltimore.

Food and refreshments will be provided.

Thursday, December 9, 2018
2550 N Charles St, 3rd Fl,
Baltimore, MD 21218

CLIFTON PLEASURE CLUB
2803 GRINDON AVE, BALTIMORE MD, 21214
SOUND EDD | 301.405.2175
JWELLS@UMD.EDU | 301.405.2175

SUNDAY DECEMBER 9, 2018 3PM FOOD AVAILABLE FOR PURCHASE

LGBTQHERITAGE

BALTIMORE EDITION

JOIN US AS WE EXPLORE THE LEGACY OF BALTIMORE'S LGBTQ COMMUNITY AND THE ONGOING EFFORT TO DOCUMENT HISTORIC AND CULTURAL SITES THAT REFLECT THE ENTIRE COMMUNITY.



From Isolation to Inclusion in Historic Preservation Planning

Jeremy C. Wells, Ph.D.

Assistant Professor, University of Maryland, College Park

Marketing materials for community engagement. Courtesy Daniela Tai

HISP 650 - Historic Preservation Studio



EXECUTIVE SUMMARY	ii
ACKNOWLEDGMENTS	iv
TABLE OF CONTENTS	v
CHAPTER 1: INTRODUCTION	01
CHAPTER 2: A CONTEXT FOR LGBTQ HERITAGE WITHIN HISTORIC PRESERVATION	05
Part I: Understanding the Authorized Heritage Discourse in Historic Preservation	
Part II: Recognizing LGBTQ Historic Places	
Part III: Grassroots Preservation in Marginalized Communities	
Conclusion	
CHAPTER 3: THE METHODS AND THE TOOLKIT	24
Part I: Understanding the Authorized Heritage Discourse in Historic Preservation	
Part II: Recognizing LGBTQ Historic Places	
Part III: Grassroots Preservation in Marginalized Communities	
Conclusion	
CHAPTER 4: STUDY AREAS AND QUALITATIVE DATA	30
CHAPTER 5: TOOLKIT IN ACTION: DOCUMENTING THE 'ILLUSTRIOUS' CLUB HIPPOPOTAMUS	46
The Chanticleer, Club Hippo, and CVS: The History of 934 N. Charles St.	
1939 - 1972: Chanticleer Cocktail Lounge	
1972 - 2015 : Purple Hippopotamus / Club Hippo	
2016 - Present : Neighborhood Pharmacy	
The Good, the Bad, and the Ugly: Sharing the Multifaceted Memories of the Hippo	
CHAPTER 6: CONCLUSIONS AND RECOMMENDATIONS	66
APPENDICES	72
ENDNOTES AND BIBLIOGRAPHY	81

Student participants

Katherine Boyle

Ty Ginter

Kelly Marie Haley

Daniela Tai

Kelly Schindler

Emma Schrantz

With additional contributions by:

Josette Graham, Kathleen Jockel, Tamara Schlossenberg

Supporting organizations



Goal

To create a **toolkit** to document places associated with LGBTQ heritage in Baltimore City for Preservation Maryland, with a focus on:

- The impact of the authorized heritage discourse (AHD) (Smith 2006)
- LGBTQ deficit in historic preservation practice and scholarship
- Grassroots efforts

Data sources

- Interviews of local members of the LGBTQ community
- Archival materials
- Case study of the Hippo



Artistic rendering of 1990 Miss Hippo competition. Courtesy Daniela Tai

Community workshop

- Place-centered story telling

THE UNIVERSITY OF MARYLAND + PRESERVATION MARYLAND
PRESENT

COMMUNITY WORKSHOP

Join us and help document the places and spaces of the LGBTQ community in Baltimore.

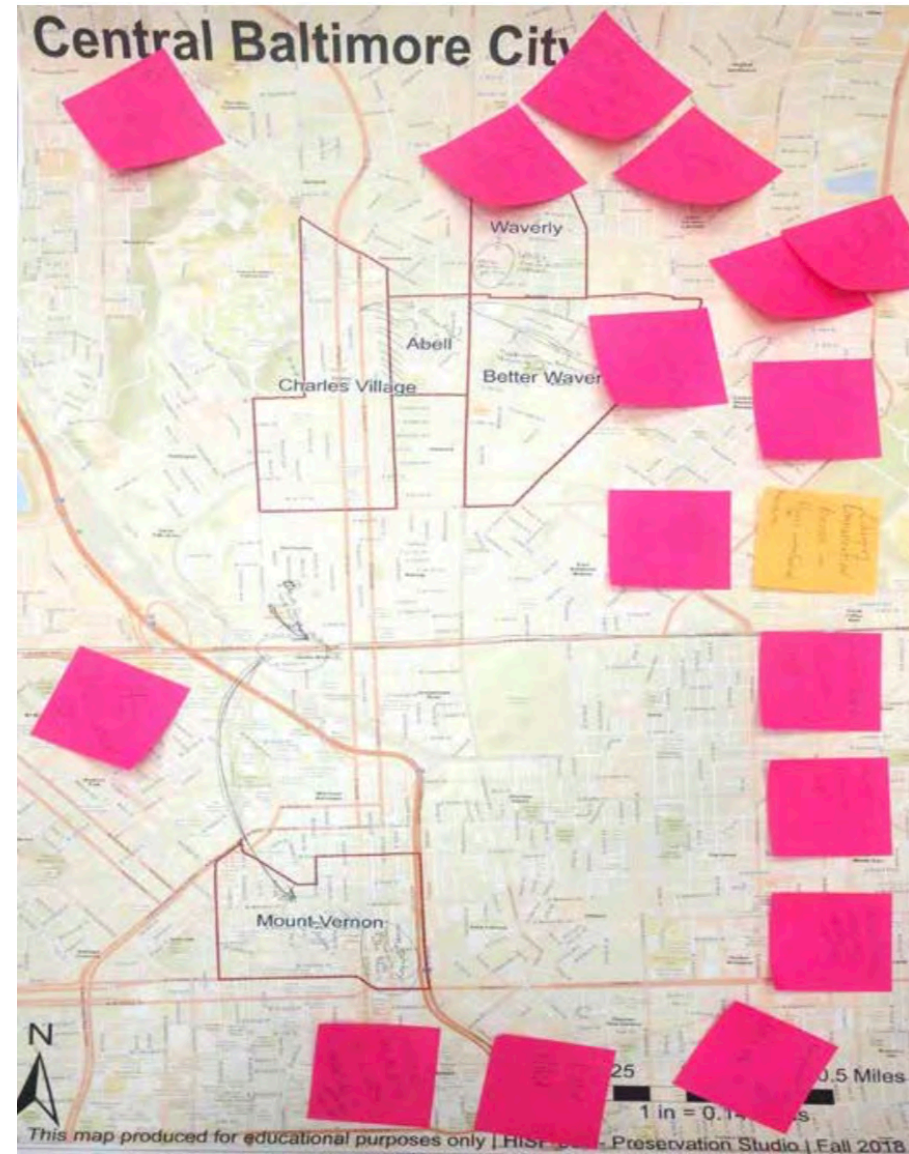
LGBTQ HERITAGE

COME SHARE YOUR STORIES!

Thurs. Nov 8 | GLCCB | 6pm-9:30pm
2530 N Charles St, 3rd Fl,
Baltimore, MD 21218

FOR MORE INFO, CONTACT:
Jeremy Wells, Asst. Professor
jcwells@umd.edu | 301.405.2176

Food and refreshments will be provided.



Results

- Many untold stories of the African American LGBTQ community in Baltimore
- LGBTQ history in Baltimore privileges white voices
- African American history non-existent in existing written secondary sources

The Toolkit: Interviews

TOOLKIT TIP

Flexibility is key. The same set of questions may not be meaningful from one group to another. Following the interviews, each interview team created a summary and coded the conversation by themes. These themes were compiled into a studio-wide list accessible on a shared Google Drive, which allowed all the studio members to recognize both the common themes and insights as well as unique individual experiences.

Through the series of interviews, studio members learned about other important neighborhoods in Baltimore that were significant particularly to the black LGBTQ community; these neighborhoods likely would not have been discovered if the project remained limited to its original scope.

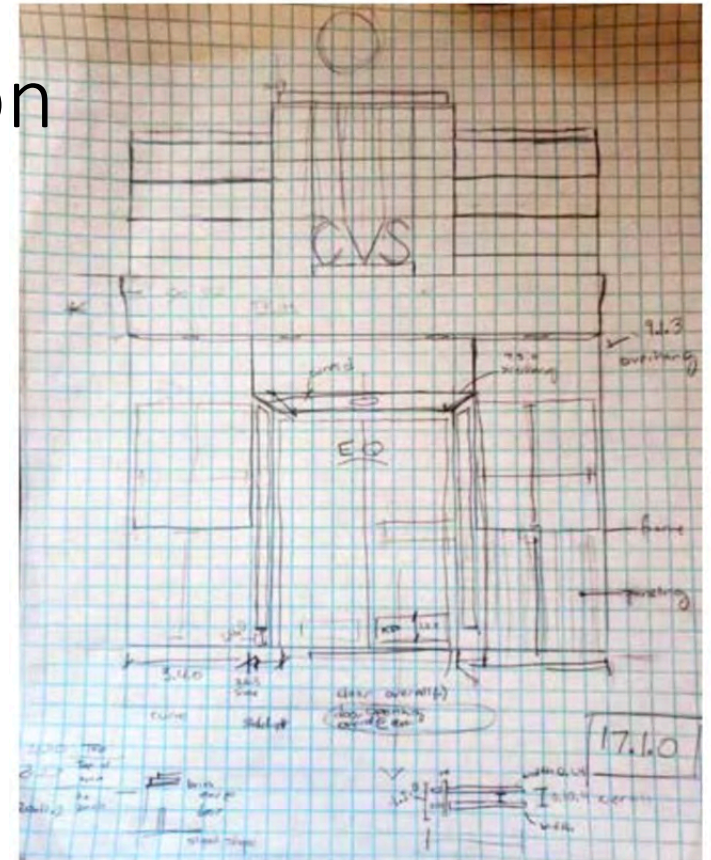
Toolkit: Archival research



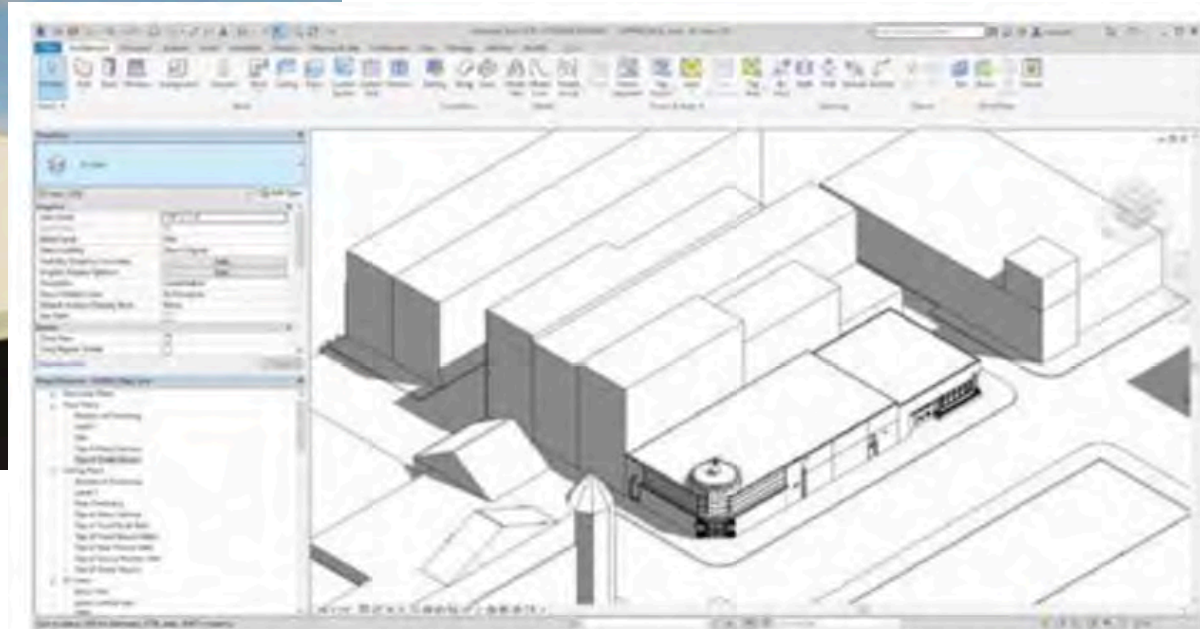
Toolkit: Physical documentation



Emma Schrantz and Katie Boyle document The Hippo by hand.



The field sketches created by Schrantz and Boyle. The sketches were then put into Building Information Modeling software to create a 3D model and architectural drawings (see next page).
Courtesy Emma Schrantz and Katie Boyle



A three dimensional model of The Hippo created and rendered in Autodesk Revit. Revit is more likely to be used by architects or architecture firms familiar in historic preservation to recreate or document buildings. SketchUp Free is a similar 3D modeling software that can be downloaded online; many free tutorials for SketchUp available on YouTube for the inexperienced user. SketchUp is a great tool for individuals or nonprofits that do not have the money to spend on hiring an architect or architecture firm.
Courtesy Kelly Haley and Emma Schrantz.

Student recommendations

RECOMMENDATION #1: Start with community engagement.

RECOMMENDATION #2: Sensitivity, flexibility, and open-mindedness are required.

RECOMMENDATION #3: Plan for the unexpected.

RECOMMENDATION #4: You need a public-facing outcome.

Student recommendations

"EVERYDAY PEOPLE"

- Explore your local LGBTQ history. Can you name any sites nearby that are associated with LGBTQ heritage? See if your local historical society or other organization offers walking tours or public programs.
- Check out projects like LGBT NYC Historic Sites Project or other heritage groups before your next trip and visit some of the recommended sites. How are they interpreted? Are they designated in any way? What does the text on these plaques say?
- Ask questions at historic sites. What does the tour guide mean when they describe someone as a "confirmed bachelor" or similarly coded phrase? Invite conversation about historical meanings and how they change over time.
- Get involved with a local history project or start your own!

More info

Report is available from the University of Maryland's DRUM at

<http://hdl.handle.net/1903/21809>

A woman with dark curly hair, wearing a blue dress and high heels, is walking on a paved path. In the background, there is a modern building with large windows and some trees. The scene is lit with warm, golden light, suggesting late afternoon or early morning.

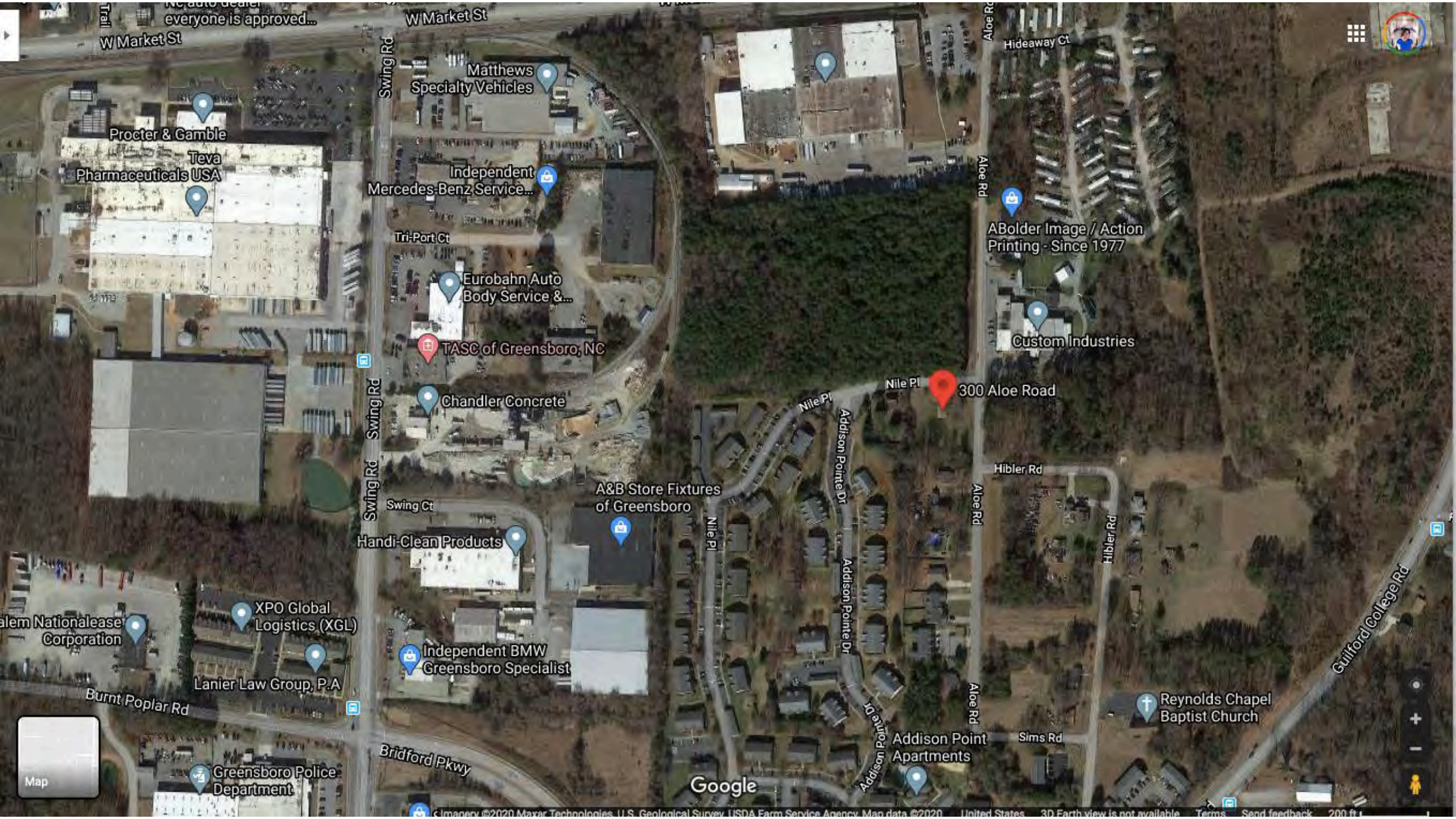
A Black Sapphic Non-Binary Femme Planner on Her Past, Present and Planning's Necessary Future

Kristen E. Jeffers
The Black Urbanist
@blackurbanist

Kristen@theblackurbanist.com

Past

Generations of Land Rights



Google

W Market St
W Market St

Swing Rd
Swing Rd

Aloe Rd
Aloe Rd

Hideaway Ct

Procter & Gamble

Matthews Specialty Vehicles

Teva Pharmaceuticals USA

Independent Mercedes-Benz Service...

Tri-Port Ct

Eurobahn Auto Body Service &...

TASC of Greensboro, NC

ABolder Image / Action Printing - Since 1977

Custom Industries

Chandler Concrete

Nile Pl 300 Aloe Road

A&B Store Fixtures of Greensboro

Handi-Clean Products

Hibler Rd

alem Nationallease Corporation

XPO Global Logistics (XGL)

Lanier Law Group, P.A.

Independent BMW Greensboro Specialist

Burnt Poplar Rd

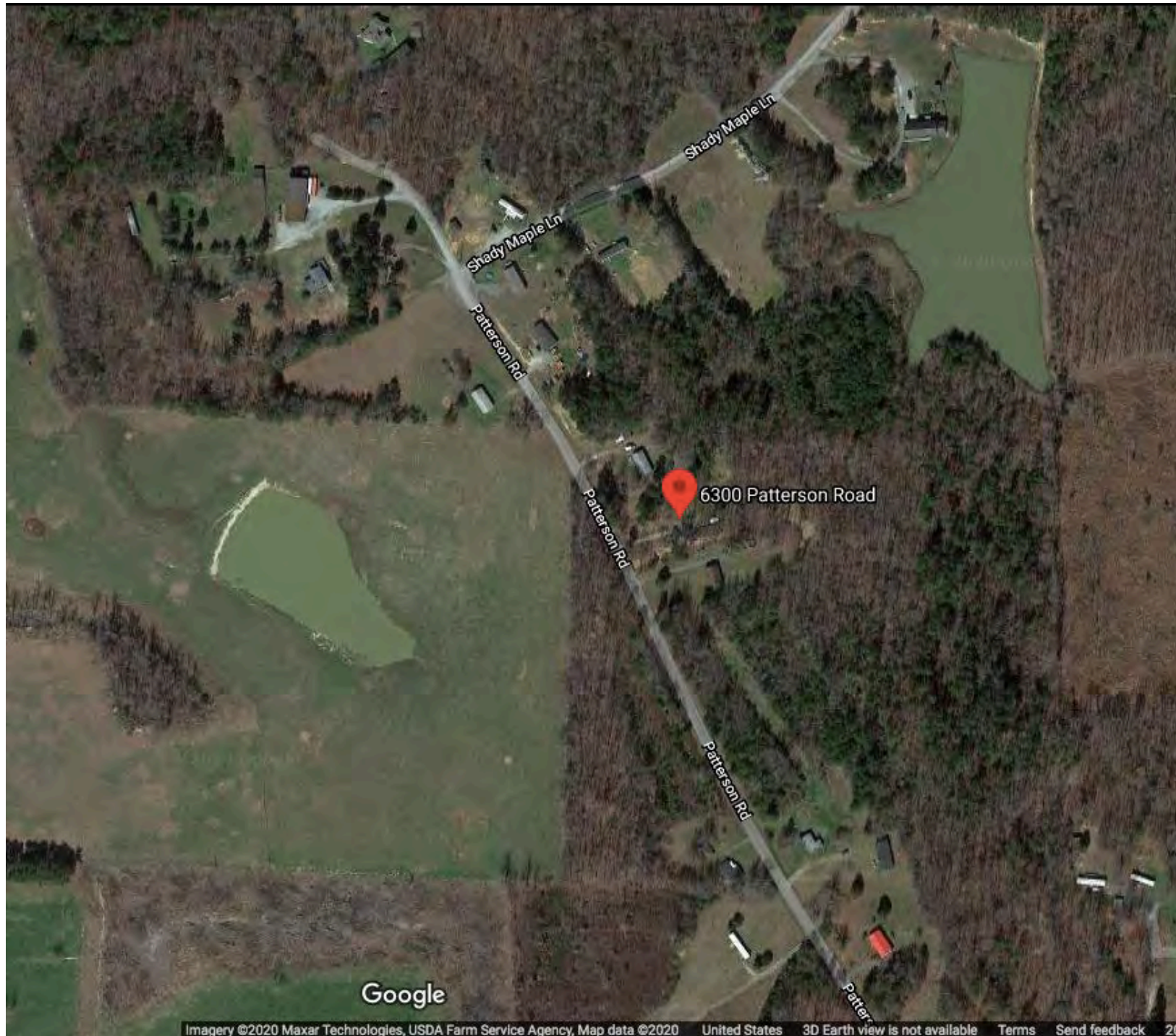
Greensboro Police Department

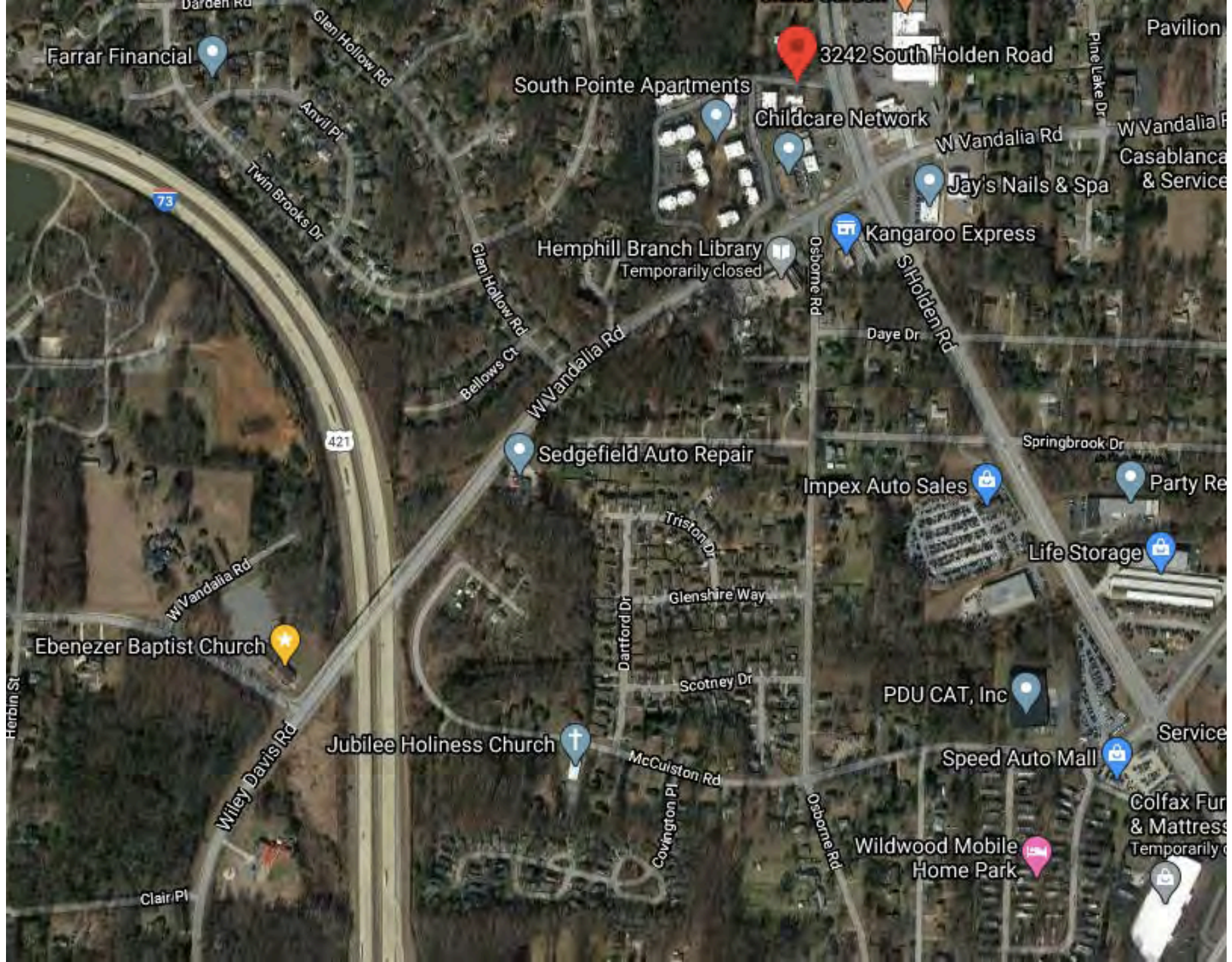
Bridford Pkwy

Addison Point Apartments

Reynolds Chapel Baptist Church

Guilford College Rd





Farrar Financial

South Pointe Apartments

Childcare Network

Jay's Nails & Spa

Kangaroo Express

Hemphill Branch Library
Temporarily closed

Sedgefield Auto Repair

Impex Auto Sales

Life Storage

Ebenezer Baptist Church

Jubilee Holiness Church

PDU CAT, Inc

Speed Auto Mall

Wildwood Mobile Home Park

Colfax Furniture & Mattress
Temporarily closed

3242 South Holden Road

73

421

Pavilion

W Vandalia Rd

Casablanca & Service

W Vandalia Rd

Daye Dr

S Holden Rd

Springbrook Dr

Party Re

Triston Dr

Glenshire Way

Scotney Dr

Dartford Dr

McCulston Rd

Covington Pl

Osborne Rd

Clair Pl

Wiley Davis Rd

W Vandalia Rd

Twin Brooks Dr

Anvil Pl

Glen Hollow Rd

Glen Hollow Rd

Bellows Ct

W Vandalia Rd

Herbin St

Graduate Studies

Eminent Domain

Heir Property

Disinvestment

First Friday

Stadium Tax

Creative Placemaking

Globalization

Gentrification as Progress

Present

Running a MultiMedia Platform...

“to share my Black, Spiritual, Diasporic North Carolinian, Working/Lower Middle-Class, Educated, Queer, CisFemme thoughts on how places and communities work. Think of this as my weekly column, sitting on your proverbial print paper’s editorial page or as so many other of your favorite newsletters do, in your inbox.”

**Surveying Black Women-Identified
People of All Sexualities on the
Presence of Certain Black and Queer
Women Coded Spaces**



Welcome to The Black Urbanist's How Black Women* Are Really Living in Metro America Survey

*Inclusive of non-binary, trans and gender-nonconforming people who still identifies with some form of womanhood or femininity.

Start

press Enter ↵

**Exploring the feasibility of expanding
and consolidating my multimedia
platform, online textile design business
and training courses into first a mobile
booth and then into a community
center that centers fellow LGBTQIA+
folks.**

Designs by kristpattern

Products

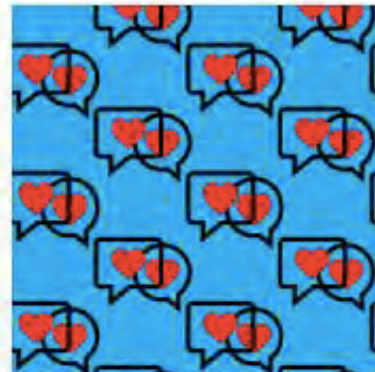
Fabric 16

Wallpaper 16

KristPattern

Surface Pattern Design and Products by Kristen Jeffers

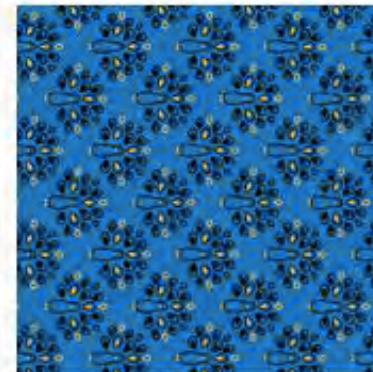
Sort: [Best Selling](#) [Fresh Picks](#) [New](#)



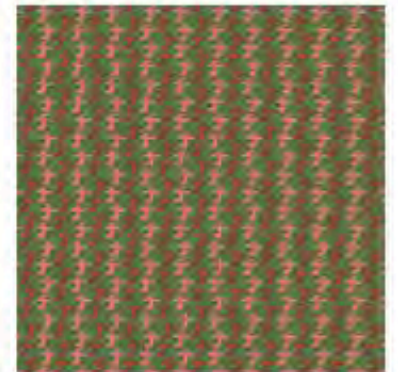
heartspeakfarconnect



foxyloxy



peafree for fabric and ...



flowing women christmas



Future (of Planning)

Evaluate our own implicit bias and how that implicit bias shows up in our maps, public meeting formats, and surveys and our hiring and staffing practices.

**Specifically,
we must be comfortable
with non-gender conforming expressions,
and support our colleagues when they are
challenged against them by the
communities we serve.**

**Listen, include and affirm existing
networks of LGBTQ community
organizations, mutual aid networks and
living communities, who have been
doing the work, as they have waited for
us in planning to catch up.**

Kristen E. Jeffers
The Black Urbanist
@blackurbanist

info@kristenejeffers.com
<https://bit.ly/kjefferslgbtq>



THE YES STORY!

YES SEGURA, MSP
AUTONOMOUS VEHICLE TRANSPORTATION PLANNER
&
FOUNDER OF SMASH THE BOX



www.YesSegura.com



Thank You!



RICHMOND, VA



TALLAHASSEE, FL



Transgender Resources



Trans Bodies, Trans Selves:
A Resource for the
Transgender Community
([2014](#))



The Williams Institute at
UCLA School of Law:
LGBTQ+ Public Policy
Research Institute
([2001](#))

National Equality Map

SNAPSHOT: LGBT EQUALITY BY STATE



Movement Advancement
Project ([2019](#))

2016

- Richmond, Virginia
- Tallahassee, Florida
- Austin, Texas
- Phoenix, Arizona
- Denver, Colorado
- Salt Lake City, Utah
- Portland, Oregon
- Seattle, Washington
- + Add destination

OPTIONS

Send directions to your phone

via I-95 S 73 h

73 h without traffic 4,924 miles

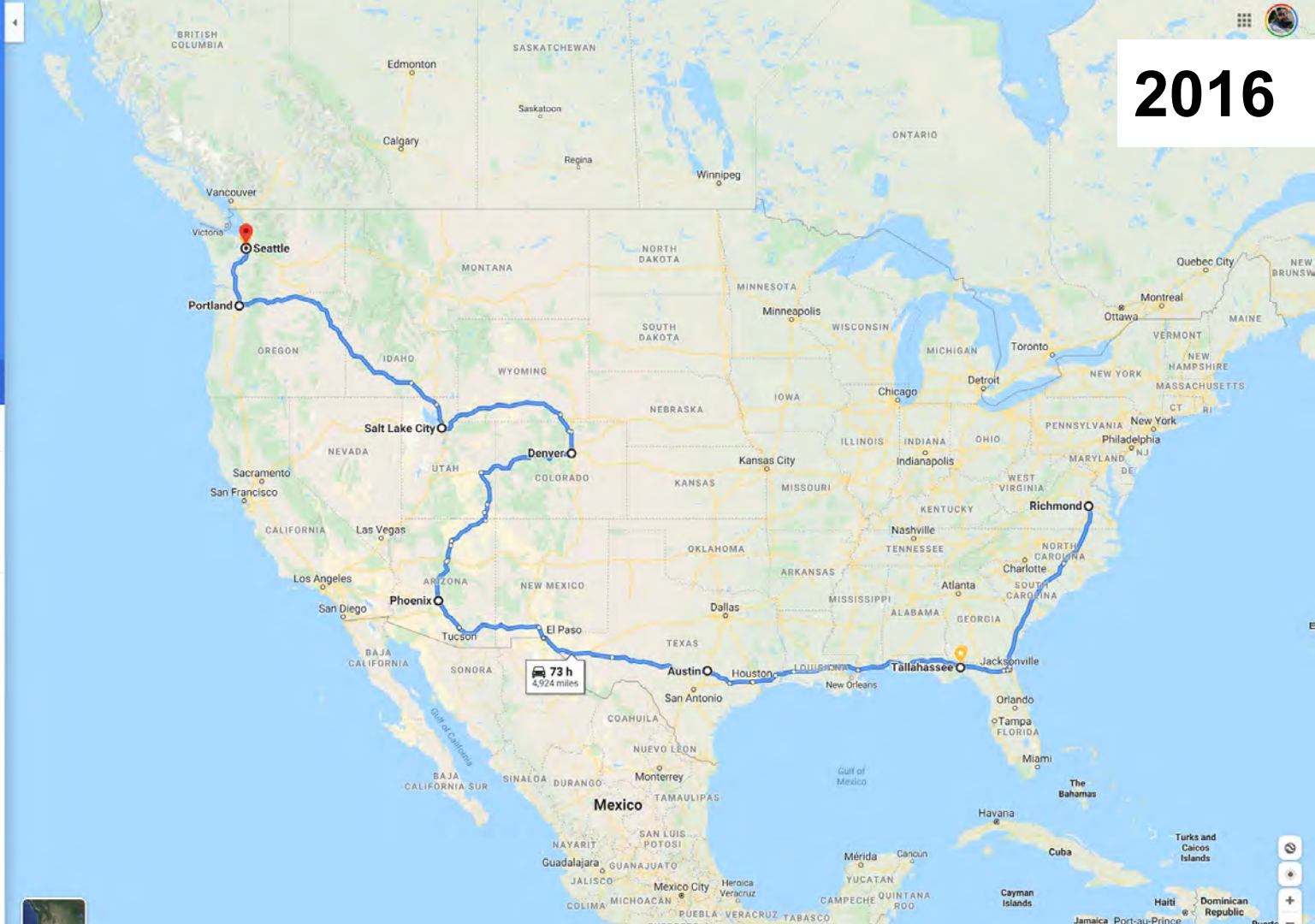
⚠ This route has tolls.

⚠ Your destination is in a different time zone.

DETAILS

Explore Seattle

- Restaurants
- Hotels
- Gas stations
- Parking Lots
- More



SEATTLE, WA

HINDSIGHT

HINDSIGHT CONFERENCE

CURBED

Geek
Wire

Uber



Intersections of Displacement:

Transportation and the LGBTQ+ Community in Seattle

Sponsors



www.YPTSeattle.org



OUT NEWS

Attack on legally blind trans woman on Seattle-area bus probed as likely hate crime

The trans rider pepper-sprayed several juveniles, allegedly over a dispute at the bus station, before they followed her off the bus and beat her, police say.

Dec. 12, 2019, 12:36 PM PST

By **Tim Fitzsimons**

An attack on a legally blind transgender woman in the Seattle suburb of Tukwila is being investigated as a potential hate crime, according to the King County Sheriff's Office.

The woman, who has not been named by authorities, was beaten Tuesday night by "several juvenile males" who had boarded the public bus she was riding. Authorities said the victim walked to the back of the bus, pepper-sprayed the youths and then left the bus. She was then "chased by the juveniles" off the bus and subsequently assaulted.

"Cellphone video from witnesses captured the female lying on the ground motionless and defenseless while being punched and stomped repeatedly by the suspects," Sgt. Ryan Abbott of the King County Sheriff's Office told NBC News in an email.

Sponsored Stories

by Taboola



STUFF ANSWERED

Fully-Loaded 2020 SUVs Under 25K



DRIVE FINANCE INSURANCE QUOTES

Seattle, Washington Drivers Surprised By New



Home



Explore



Notifications



Messages



Bookmarks



Lists



Profile



More



Yes Segura

1,312 Tweets



[Edit profile](#)

Yes Segura

@blitzurbanism

AV Transportation Planner | YPT Director of Communications | YPT Seattle Chair | Trans Man 🏳️🌈 & 1st gen. El Salvadoran 🇸🇻 | he/him/his. Views are my own.

📍 Seattle, WA [🔗 SmashTheBox.org](#) 📅 Joined August 2016

549 Following 293 Followers

Tweets

Tweets & replies

Media

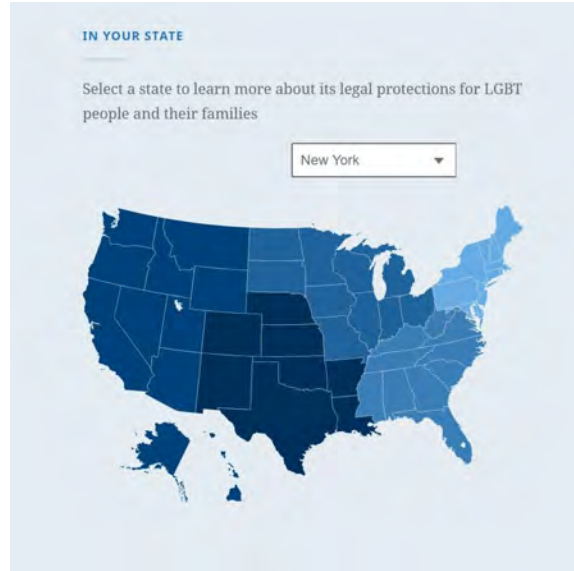
Likes

LGBTQ+ DATA!

LGBTQ+ Data



[National Center for Transgender Equality](#)



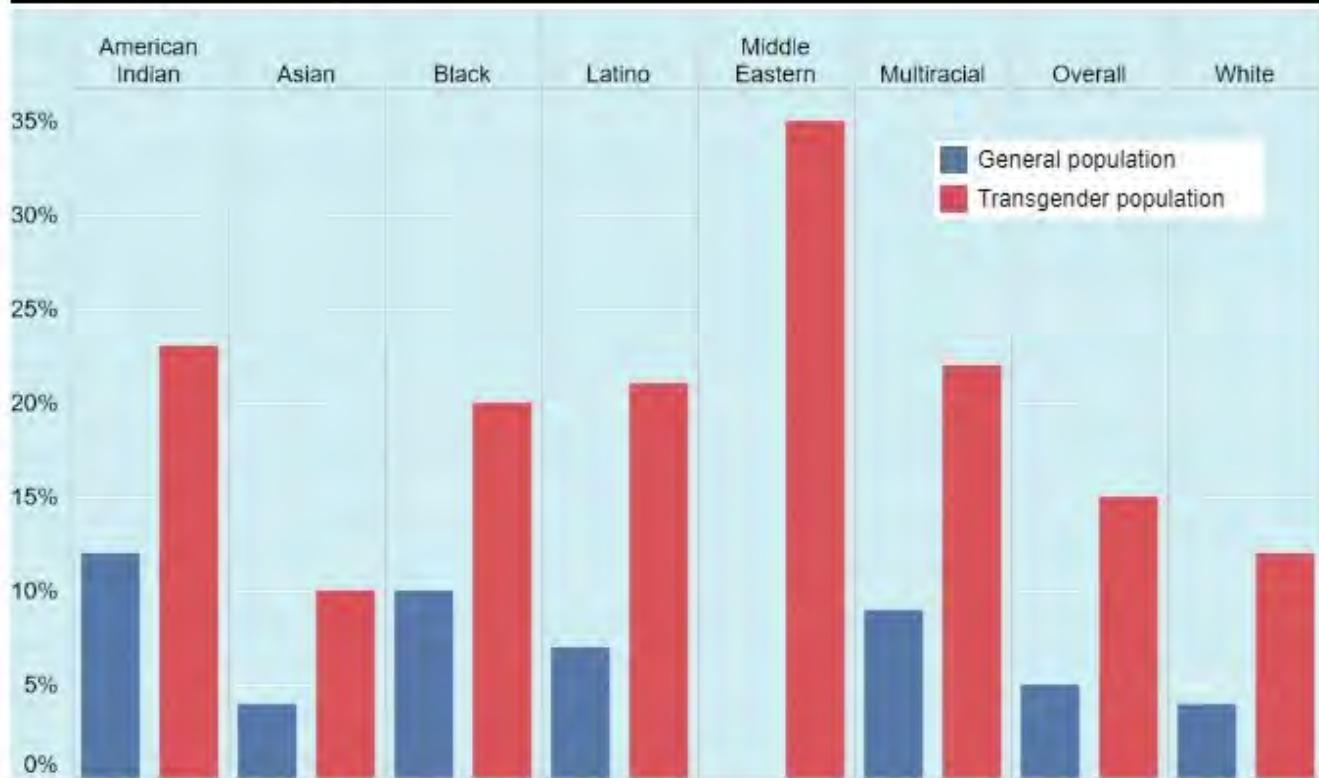
[Lambda Legal](#)



[Movement Advancement Project](#)

The transgender unemployment rate is three times the U.S. average

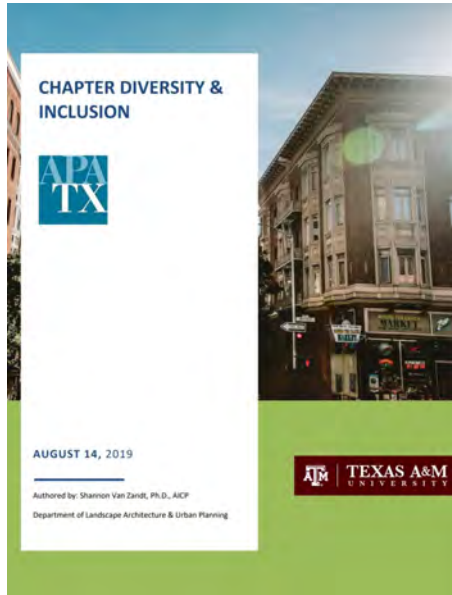
U.S. unemployment rates, 2015



Source: National Center for Transgender Equality

National Center for Transgender Equality, (2015)

LGBTQ+ Data



Chapter Diversity & Inclusion APA Texas
([2019](#))



UCLA
Understanding How
Women Travel
- Anastasia
Loukaitou-Sideris
([2020](#))



Seattle LGBTQ
Commission
Recommendations for
Seattle's 2035
Comprehensive Plan
([2015](#))

COVID-19 & THE LGBTQ+ COMMUNITY

LGBTQ+ POC COVID-19



QTIBIPOC COVID-19 mutual aid fund
- Amita Swadhin
([2020](#))

- 3/13/2020 - 3/17/2020
- 3,000+ applications = A total of \$2 million in requests
- \$100 for each applicant



- COVID-19 Response Programs
- \$500 in Rent
- COVID-19 Weekly Info. Calls

Ads by Google

Stop seeing this ad Why this ad? >

Entertainment | Health | Life | Local News

Due to the coronavirus pandemic, Seattle Pride events will be held virtually this year

April 16, 2020 at 11:03 am | Updated April 16, 2020 at 3:13 pm



The Greater Seattle Business Association spells out the word "Equality" in a cloud of bubbles at the 45th annual Seattle Pride Parade Sunday... (Batina Hanson / The Seattle Times) More ▾

By [Megan Burbank](#)

Seattle Times features reporter



Seattle Pride

- 46th year - 2020
- June 28th, 2020 Seattle Pride
- 500,000 attendees in 2019
- [Data.Seattle.gov](https://data.seattle.gov/) (Special Events)

Seattle Times ([2020](#))

BRIEF

Vulnerabilities to COVID-19 Among Transgender Adults in the U.S.

April 2020

Using data from the U.S. Transgender Population Health Survey, this study examines characteristics that may increase vulnerability to COVID-19 for the 1.4 million adults in the U.S. who identify as transgender.

UCLA Williams Institute
(2020)

HRC President on the Disproportionate Impact of COVID-19 on Marginalized Populations

By Elliott Kozuch

April 9, 2020



HRC (2020)



The Coronavirus (COVID-19) Guide

COVID-19, also referred to as novel coronavirus, is a new virus, and there is still much to learn about the severity of this outbreak. However, we know that transgender people and their families may have a lot of questions about how they can properly face this public health threat.

We want trans people and their families to stay safe—both from the virus and from any unique problems we may face with this new virus.

It is important for trans people to be prepared for obstacles if an outbreak happens in their communities. NCTE urges everyone to put together a plan of action that not only takes into account basic health needs, but also your specific needs as a trans person.

Covid-19 Guide

- Introduction
- Creating a Plan of Action
- Important Resources
- Mutual Aid and Emergency Funds



National Center
for
Transgender
Equality
(2020)



Transgender
people are:

! UNSTOPPABLE !

share your thoughts

THANK YOU!!!

- * Marc Lewis-DeGrace, AICP
marc.lewisdegrace.aicp@gmail.com
- * Brian Crane
Brian.Crane@montgomeryplanning.org
- * Eric Shaw eds_in_dc@yahoo.com
- * Jeremy C Wells jcwells@umd.edu
- * Kristen Jeffers info@kristenejeffers.com
- * Yes Segura info@stbox.org